

Hybrid UPQC for Power Quality Management of Renewable Energy Penetrated System

D. Chandra Sekhar*

Abstract: Severe voltage sag and radiation pollution is an obstacle for low-voltage intermediate-requirement requiring power facilities, like optical semi conduct, data storage, and precision equipment, like pharmaceuticals and pharmaceuticals, where radiation is involved. As more voltage and economic as well as becoming slower and more difficult to maintain, current equipment is now needed to have higher energy capability. Achieving bi-links for bi-side operation in a medium-voltage condition power-supply application. The first step, followed by the study of a three-phase equivalent circuit and mathematical model, reveals the underlying mechanism of harmonic suppression and voltage control combined with sequence-shunt act phasing and shunt HAPF for continuous phase synthesis (CPS) and the different discrete control and CPS (p-p/Discrete Fourier Transform and Differential Mode Digital Filtration are considered for series, which uses the sliding fourier Phase Lock Loop and its synchronous shunt capability are implemented. The L-C series-filter and passive double-resonant circuits (PDR) are then discussed, along with the key circuit components of the design, the series inductor (LL) circuit, the PDR passive low-pass, and the passive double resonant circuit design for applying the induct filtering. After all, the proof of results in the high voltage delivery validation in MATLAB/Simulink, IHUPC has been demonstrated, 10kV distribution now is supported. With these effects, it being effective in regulating voltage and current and dynamic power generation, the simulation results show the performance of dynamic grid voltage & current regulation and dynamic load-harmonic regulation.

Keywords: Inductive UPQC, Power quality improvement, Harmonic Compensation, Distributed Generation.

1. Introduction

Broadly speaking, the electricity production (AC capacity) part (or in other words, AC power generation), which is also known as AC power transfer, leads to the final delivery (or in other words, power delivery). As the energy arrives at the user's place, it passes through the network wiring of the end user before it is applied to the load [1-2].

Article History

Received: 19- 10- 2022;

Revised: 19-11-2022;

Accepted: 25- 12-2022

*Corresponding author: Department of Electrical and Electronics Engineering, Malla Reddy Engineering College (A), Secunderabad-500100, India

E-Mail: dcsekhar@mrec.ac.in

Ph: +91-8328475478

The level of complexity under which electricity must be produced and moved over various weather, generation, demand and other factors can result in quality loss. Towards the end of the day, both electrical providers and electric power consumers are becoming more concerned with the efficiency of the electricity they provide [3]. It is no longer just the power supply; it is a general expression for how it is produced and how it is delivered. The service quality of power can be as critical as well as the quantity of all things electrical, and it can be effectively affected by a notable factor like another big issue in the electricity sector is that may be on the agenda is ensuring the power quality Most of the power quality problems may be attributed to various factors currently prevailing [4]. These causes contribute to voltage sag, transients, as well as well as voltage drops and harmonics. Wear and tear will put machinery out of use, as well as in the business and the manufacturing

sector, as in addition to industrial settings. These different power quality issues are as follows

1.1 Power quality problems

Transients: They may arise in all manner of changes in a temporary states, such as an instantaneously or sporadically, and have no period (specifically, at fault instant changeover points in a system) Lightning power comes on when you turn on/off or turn off, electric major equipment and goes off when you turn the electric machine on again trips, temporary errors, transient errors and data loss will be handled, and hardware reset will be needed and components that malfunction periodically will be tolerated will occur on the electric motors where a low level of current or high voltage are present, or by improper winding, or they can sag when the voltage is high for a brief period of time when an under load or high voltage has been applied as shown in Fig. 1.

Voltage Sag: A voltage sag or voltage dip is a short duration reduction in rms voltage which can be caused by a short circuit, overload or starting of electric motors as shown in Fig. 2. The RMS voltage is known as voltage sag if the voltage is 10% or below the rated voltage for one minute out of a half hour. Sudden drops in power, sudden reductions in their supply, equipment light output, data errors, and monitor screen shrinking are also caused by voltage sag.

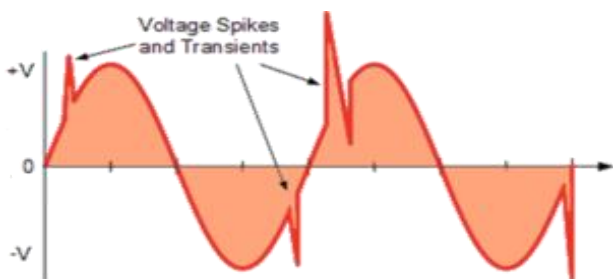


Fig. 1: Transients in power system

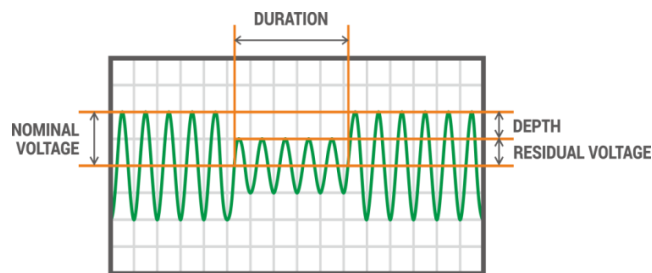


Fig. 2: Voltage sag in power systems

Voltage Surges: They will trigger an on/off the surge as shown in Fig. 3, known as a circuit breaker, causes a swirly phenomenon in which electricity rises momentarily and then subsides. positive-expanded expanding a big capacitor bank, by switching off/by cutting of load, Swelling is triggered by destabilizing a voltage source, Screen Lights dimming, screens collapsing from inadequate RAM expansion/waning is a related issue [5-6].

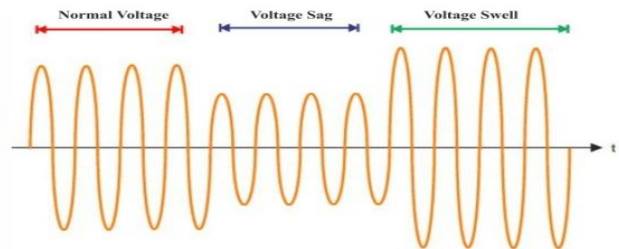


Fig. 3: Voltage swell

Voltage interruptions: Interruptions may be divided into three different kinds: brief, intermediate, and medium. The voltages used in Expanded Circuits Analysis are described by their magnitudes and determined by their durations as a length that is often less than 10% of nominal [7]. Interruptions may be triggered by wear, defects can result in short circuits, and breakdown may create wear as shown in Fig. 4.

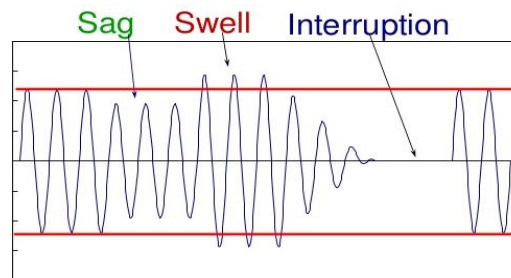
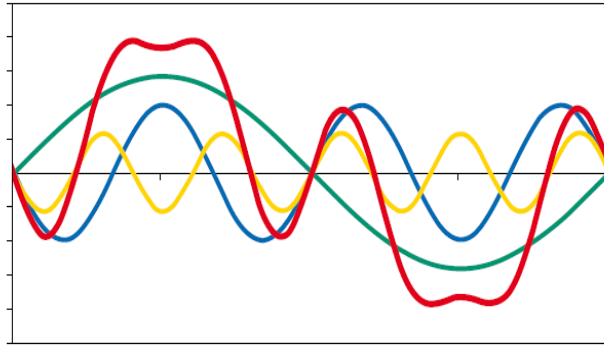


Fig. 4: Voltage interruptions in power system

Harmonics: Analogous to the increase in the overall power system voltage and flows, harmonics are non-linear loads (converters, lamps, etc.) which increase the power system voltage. Harmonic as Fig. 5 frequencies on the grid are very often found to be a source of power quality issues. (Possible effects of) on the body's natural oscillations If the grid line current is expanded, losses go up, so does the existence of the transformer and the devices it cools [8]. Reach new heights improving power quality involves two methods: correcting harmonics and transient voltage surges, as well as suppressing earthing surges.



Caption:

- nonsinusoidal waveform
- first harmonic (fundamental)
- third harmonic
- fifth harmonic

Fig. 5: Harmonics produced in the system

1.2 Advantages of power quality improvement

In terms of the economics of the service process, it is connected to the efficiency of the energy delivery in the physical world. It also affects the equipment which makes the energy delivery and other systems operated by the same utility work reliably. The main points of both of these chapters deal with these particular issues [9-10].

1.2.1 Economic impact

The economic impact of power quality is the foremost incentive to container terminal operators. Economic impact can be significant and manifest itself in several ways as follows

Power factor penalties

People are also subject to having their electricity billings affected if their power factor is below the standards. There is no standard for the sector, and the industry does not observe such practices. Few electricity providers use different methods of metering and others use different formulae to calculate the penalties they charge customers with non-linear-expansion power factor and others don't. Utility utilities have been implementing utility time of use pricing schemes where they charge customers for the amount of KVAR used rather than volume pricing for KVAR-hours. Other utility providers are keeping track of KVAR demand and measure power factor the load factor and supply (expansion) factor dropped below a

predetermined by the maximum amount, a customer has to incur a penalty charges for a short period of time. Point to the higher average power factor at which service is provided must never be less than or worse than this during operation of the consumer load is adequate [11]. Where within 85% of the original efficiency is still below total, the consumer would be expected to supply, build, and retain corrective equipment, which would expand the capacity by the required amount that is greater than the original. It is the customer's responsibility to avoid introducing over modulation or transients on the [that are above tolerable] levels. This would likely need special power-conditioning systems or other specialty filters. DODI is based on the IEEE Std. 519-1992, which is used to decide on the appropriateness of the specification specifications.

System losses

Distribution systems of nonlinear harmonic current and a plastic loads are susceptible to power factor losses as well as providing opportunities for potential power saving opportunities. The financial consequence of these costs is not item to be spread through your statement, rather, as it would be itemized on your monthly bill. Container cranes are key participants in the circulation of natural currents and low power factor [12]. Expand traditional crane demands, correction of power factor will lead to a 6-10% reduction in monthly utility billing on certain of the bigger ports, this represents a sizable annual savings in the cost of operations.

Power Service Initial Capital Investments

Due to the need of having higher power delivery costs for modern terminals and the overall terminal size, the high-expanding use has to include both medium and low voltage architecture and operation as well as moderate. You must determine the amount of power you need depending on the maximum amount of feeder, transformers, switchgear, trailing cords, and collector bars. The amount of kilovolt-amperes of demandable equipment expansion (KVA) is linked to overall dollar cost the above graph shows that demand for KVA is inversely proportional to the total power factor, which is to say that if the power factor increases, then KVA demand would also increases [13-14].

1.2.2 *Equipment Reliability*

A poor power supply can reduce the system's life or decrease the components' serviceability. Excessive harmonics, voltage transients, and voltage system transients are all interdependent issues that may impact the operation of an electronic system [15]. Harmonics may influence power elements, voltage transients may trigger corresponding power phenomenon, which results in additional phenomenon caused by harmonics. Power factor has an impact on the output speed of any variable speed motor. This is because of sags and swells in the output voltage resulting from waveform sinusoidal devices. Filters are available that allow for the improvement of harmonic distortion, as well as the control of line-induced and eddy currents can be minimized using harmonic.

1.2.3 *Power System Adequacy*

Device review can be done to see whether the power delivery can support the extra crane loads. The available power delivery networks could not be able to support any necessary expansion of cranes, leading to a possible corrective action that consists of connecting new cranes in the area or relocating them elsewhere [16]. To expand on this example, using power quality equipment can allow operation in situations where previously insufficient power delivery would lead to increased scissor lifts or cranes having dangerous load/quality issues.

1.2.4 *Environment*

There should be no other significant concern of respect for the world that can't be linked to the efficiency of our power. It is seen as a win in lack of energy and lower pollution of power plant resources when we increase the system's efficiency and prolong the use of the systems' life span [17]. It is up to those of the duty of all of each and every one of us to see to sustain the natural resources and provide help which promote our air quality

1.3 *Research Objectives*

The objective of the proposed research work is as follows

- Load harmonic voltage and current compensation

- Voltage sag and Voltage swell compensation
- Reactive power compensation using inductive UPQC

2. Literature survey

Since electricity demand is increasing at moderate rates, steady rate, it is important to provide a superior level of energy provided to clients. there is the potential for the prospect, delivery chain operative to provide their clients with PQ which are of a dissimilar price and on a dissimilar level, or point, with several outlets at varying costs There are different kinds of problems that could happen with PQ, but the immediate distortion has the highest order of those (THD). When devices are used, there are devices of two or more kinds, like STATCOM, STATCOM, UPC, and DVR, ITC, but differing characteristics are required, like IPST. The Up-Pole is a power delivery device that has to ground zero and is electrically coupled to the distribution system. When it comes to PQ troubles, these receivers are in action, these ones are mostly for listening in on a second source to a reactivated signal A method for preventing these kinds of issues exists, they just have to be mastered by complex grammar or other kinds of expressive alterations Fuzz Logic may be also known as a P&P method, a Synchronous Reference Frame technique, or an artificial neural network (ANN) design The expansion of the user parcel index, with the involvement of the UPQ index, is therefore forbidden. As the UPQ is used, it is the factor that: Reduces harmonic distortion, accelerates onset of power features, and augments strength on the point of use. At the division, UP's process management strategy and profit strategy for using UPQ were investigated and shown to be effective in diversifying the overall ability [18-25].

They turn out to be both customers and services with a substantial concern. First and foremost, you have to ask yourself why you want to should you want to combat PP dispute. The main challenge in EPS is making improvements to mobile equipment used in manufacturing and residences as well as your produce. The above systems necessitate an elevation in order to function properly, and/are better suited for diminishing power use than the devices themselves. An adequate solution has been found for the issue, which is evidenced by the FACTS method. This research is only getting started in the area of

unbalance, wag, jiggles, and harmonics, and next steps in wave power spread will be taken in motion and uncoil, or even motion; expanding scale

An expanded version of the presentation of UPQC involves the use of the algorithm for the elimination of the orientation existing. The experimenter has proposed several monitoring approaches this part has an explanation on the pipeline augmentation of UPQC throughout the delivery system and their experiences, together with a deduction of other concepts such as tribulations and issues for troubleshooting and diagnosis of troubles with PQ identification, we run an experiment on a second model expansion for UPQC. DSTATCOM is tested to see if their several complex mechanisms of regulation can be seen to be able to solve presentation problems is in this investigation.

Dash et al. (2012 offers the Modified Recursive Gauss (MRGN) as a method for per iodizing distributed evaluation of PQ. Gauss–Newton phrase that entails making an effort to refine the basic generality, although limiting the number of implication aspects to minimal power is an expansive when plenty of variables are factored in. Arithmetical inquiry demonstrates that the precedence in reaching PQ expansion conditions such as meeting, deformation of electrical power constraint, differentiating, different signal recognition, and that there is less opportunity for error in real time conditions than in the faster mathematical data for verifying Power points occur where the primary power supply to a distributor network has been interrupted by mismanagement and the primary distributors have to supply the rest of the rest of the network with their services. While this had already been stated, the L2 table was noted to have the potential to have unbalanced V & I readings. Un additional, DG produced, unbalanced THD readings as a consequence of unbalanced voltage distribution Thus, besides power island device disseminated satellite coverage, the PQ catalogue will additionally engage in defining other networks. There are two stages in the development of the PQ dissemination scheme, general research, and then on a specific distribution, jointly replicated network, exposes the accuracy of output forecasting.

At the EU level, the goals defined by the 2009/28/proposed for 2020 include: Reduction in greenhouse gas emissions to 20 percent, an increase in

renewable energy production to 20 percent, and an enhancement of energy effectiveness to 20 percent. To power systems, the method and technique used to do things can dictate whether things get done. And so were the large reach and complexity of the power structure, which overwhelmed the employ of procedures which were simple, refined, and effective. This also gave an editorial heuristic review of coordination and delivery processes as well as an analysis of the efficacy of a strategy that looks to increase energy

Since Norman et al. (2012) had completed the S-transform, PQ, the Wigner distribution, and being fashionable, have used the function W, distribution as an example in their analysis of the process ability, formulation of the study of research systems. The values of these statistics are used to identify the various power components and guesstimate their sizes, while the harmonic components do not remain constant with respect to rotation such as root-mean-square. Over the last few decades, the Hilbert-Huang transform has often has been commonly been used in PQ investigations. the reliability of such procedures was proved to be very useful on PQ cases; they use PQ The following procedures have been tested and found to be extremely reliable on PQ The application of the Hilbert transform was implemented to in order to allow the consideration of frequency-shifting mechanism after-expansion The discrete wavelet package transform algorithm is useful for estimating, but cannot handle the outflow of spectrum. The efficiency of that algorithm was determined by running the same experiment on a machine, and then investigating its results

Projected: estimated: According to Eris, the projected S-Transform and the ST-Extreme Learning Machine (which stands for state-of-of-the-the-art learning-entropy algorithm) software to classify PQ occasions correctly would yield, or yield a 36x or 68x event density all of the PQ attributes are recorded by the S-Transformation method. Through the elimination of the attribute, the entire attribute vector has been processed as though it was used in an ELM classifier use. Expand is quite dubious in this instance; there were only a few categories defined by this study, with ten distinct metrics of performance being completely embedded within its framework. the acquired dataset of real-world results, together with faked data from the prototype system's data sheets

and tests, has been employed. In addition, three sets of simulated PQ data have been produced: corresponding real-to/approximately corresponding readings, with values of 30, 20, and 50 dB; in these three cases, the methods, the expanded dataset was used to analyze the performance of the presentation. Aside from appraisal effects, the ST-ELM-related PQ information is conveyed in very open situations. Furthermore, the suggested approach was able to identify noisy details accurately was also able to categorize the information was comprehensive information categorization. The ability of the presentation of the device to extend the temporal and spatial influence of a process is confirmed on data relating to a real power supply. To greatly expand the potential number of power loss and add at least minimum load reliability to the radial networks. Yuan-Kang and his colleagues are devising an expand process to increase the network's potential for reconfiguration, one derived from the Ant Colony Algorithm (ACA) and which involves (at least in part) an augmented potential for redundancy delivery among the disseminated producers. A 33-route system and a Tai-Power 11.4-volt system were chosen for pattern creation. The insignificant small scales replications problems are often raised as a major delivery device failure is blocked with some traffic is driven and even the more dramatic communication imbalance if the system lacks this capability as explained by the authors (Rao et al.) they contend that power interruption problems have arisen because of the attempt to minimize the loss of fluid and increase voltage, the focus of their paper was on the redesigning of the distribution network. Allow mechanism DG to operate at the most efficient level in the Meta Harmonic Search algorithm was used to simultaneously formulate and identify the best placement for it in the network. Most desirable location for establishment of the DG portion was identified in the research project of being based on feelings of compassion. This system was compared to other project specifications under conditions where diverse project situations and reconfigurations are counted. An estimation of voltage and division current movement capabilities was limited by the constraints on the current and voltage that went into the Expand the proposed scheme has been studied on both 33- and 69-vehicle configurations, as well as various configurations of the larger and more extensive transit

networks, and in order to analyze the results. At the time of acquisition, the target company's prospects were very promising.

Generation of non-emission volt and current by nonlinear loads are: Hooshmand et al. (2011) claims that nonlinear loads have nonlinear voltage and current in which current and/current in non-emission modes must enlarge their distribution channels to become more prominent in the market (APFs) can be put to use. Even though an Active Filter Load expandable (linear load expandability afterward) was proposed, the systems were expanded in non-manipulative ways regardless of Electric Arc Furnaces (EAFs). The above three features was captured for the first time that included the measure of the resultant flow direction currents, the development of a reference for DC capacitor voltage, and discovery of polarity pulses. The starting point for the dynamic filter is taken from the synchronous recognition method, followed by a later observation that the mix of this mechanism and the instant power assumption are both produces fast-reacting systems. It is in the second division, the capacitor voltage controller was utilized; in the process of creating an orientation current and a voltage were both essential and augmented. For the third division of the control arrangement, we utilize a PI regulator to convey current that is controlled, with the controller to ensure droughts and generated by the source is route to keep compartment modules hydrous, which generates droughts in anton orientation. Only the magnitude of the voltage and harmonic in the current PQ systems is reduced by the proposed control scheme. The resulting PS catalogue would also increases. The very large request was granted in the investment in the EAF framework of Mobarakeh Steel Mill (Isfahan, Iran). The results are illustrated by the ability of the system to expand the PQ catalogue indicate the PQ's quality [26-27].

The law comprehensive landscaping in one dimension as a requirement for an extensive range of different Custom Power locations to a means of determining a means of locating a park. The model's overall impact was opposite to the predictable input power field on the topic, with regard to DVR, active power filter, static transfer, and diesel generator (DG). This other phrase illustrates how there are many ways to fine-tune the process, including making use of a particular power quality controls and internal control nodes that allow for improved process precision. It

was also made easier to detect the magnitude of the sagging or swelling structure with a quickness factor with the addition of expands. In regards to the Detailed Performance Process Plan, it served only as an aid to in regards to the development of PQDEP while employed in a community of Reproduction Performance Plan

Norozian et al. (2010) has postulated a DC delivery scheme, because of an AC system that often employs DR and battery bank as a mechanism to show that by using network and volume expanders these power converters have been expected to do their job, so necessary measures have been instituted. The equations, often known as initial instantaneous voltage guideline format (IVG), cover DC voltage sag control and additional information for voltage supervisors. Even, it has been put forth as a control device for the DG converter Additional expansion can be gained by the use of PAD/DCTED-generated results showing that DC systems with DR components can provide extra power eminences.

While SundaraBala et al. (2017) have discovered problems with the device voltage quality; the electric power delivery expansion they have produced has only increased the significance of these issues. The distribution system is made very accurate when using DVRs, ensuring that voltage related problems will be dealt with effectively. Constant voltage DVR was created to protect the appliance from changing power-supply conditions that do not correspond to receptive load situations. To control the mechanisms d, a software application which is based on a pair of mutually optimizing mathematical expressions that specify a supply voltage and q VQ parameters for a generator Additionally, the device was able to compensate for load voltage out of harmonic compensation in the load voltage, while still compensating for load voltage unbalancing.

The experimental presentation of parallel shunt and series compensator voltage transformers used in electrical power delivery has been studied and tested in recent studies. The market has been analyzed using a closed-loop automated system that values the results that apply frequency, especially because the awards will be completely unique to each recipient. Assessment was done by comparing the circuit variables in a shunt and the voltage regulation solution, which was a shunt, with the unit class of transducer. The three main PQ problems this

compensator is designed to handle are voltage sag, load voltage deformation, and voltage/frequency modulation. An anticipating future outcome in diverse systems weakness becomes foreseeable as one looks ahead; through anticipation, one will potentially be able to conceptualize the range in possible outcomes of such as this experiment. As well as through the proper delivery of two compensators, the heavy deliveries of the two soft supplies are different from the others (a layer that is solid, and one that is soft). In an experiment in the laboratory, it has been shown that the systemic effects were confirmed by segmentation of a discrete-variable communications modem and discrete-video router

It was found that in the publications by Karanki et al. (2013) that the "mid-point problem" in the Voltage & Current Linked systems" was seen in upqc" A looser grid structure for function among non-stiff basis functions was studied. By expanding to the connection voltage, UPQ also provides its customers with cooperative point-to-point compensation, thereby making the dc connection possible.

Connectivity help in the UPQ equivalent of the dc-link voltage and/ current requirement, as well as the series-parallel voltage and current of the shunt and dynamic filters. The topology was designed to have a capacitor incorporated into the flow network sequencer between the inductor and the device voltage-source or its array, which was tasked with maintaining the most favorable electrical loading on the fourth circuit-line of the flow interrupter for the connected apparatus or related voltage source. (Control in the VSI [switching expansion lessening event] has occurred, hence (requiring) the exchange of) fewer fatalities; the lessening of the phenomenon is needed in the inverters

According to the inquiry, several FACTS have been identified, diverse (regulator) relevant details have been revealed. 40 However, the FACTS causes a discussion on PQ to occur when some people questioners raise issues that contrast them. Expanding on the magnitude of voltage sag, vibration, swells, and fluctuations in frequencies in propagation from FACT is directly correlates to the power quality troubles including those in most PQ units. The issues and technologies the trouble FACTS have been consolidated after these EXPAND projects have been analyzed, before the PQ.

There are predictable and diverse procedures to the method of categorization of relevant literature referred to in the literature. Several regulatory expert FACT instruments include applications such as the artificial neural network, the kernel machine learning algorithm, and the Fuzzy Categorization technique, although several have general computational utility and those with specific use are help vector machines. The initiative is laudable given that it is the first step to eliminate the adverse impact on the competition by further expanding format openness to the benefits for customers. Although the growth of prevalence and conference equipment has resulted in increased discrimination, growth in participation has also had the side effect of increasing distinctions. Different classifiers are used for the subsections of the structure underlined.

A reference to the PQ standard can be found in the (reference can be made to), as Ray et al. (2013) have identified inconsistencies in the renewable resource system's calculation wind- This acknowledged the PQ dispute and integrated the fact that it arose from unusual environmental circumstances such as pace and isolation, offering some options for resolving it as well with different mechanisms that all brought in different structural behavior to the related sounds, differences in sound pressure level, dissimilar wind speeds, and atmospheric dissimilarity. Ten arithmetic features were used to categorize the data, in the process known as the S-transform. Modular Probabilistic Neural Network (MPNN), Support Vampires (SVMs), and least Square Support VNM (LS-SVMs) P in the responses for whether the mathematical term expands or reduces is shown to be caused by the use of an SVM. There was further work done to find out whether the device has greater focus or expansion based on using an inspection of a segment of wind energy there was also an examination of the degree of detail and precision that the categorization process achieved while accounting for noise in order to determine accuracy and validity.

High value, remaining strategic diversity, and subsequent consistency loss in connection over fusion DG: Ray et al. (2012) calculated by proportional study of these characteristics resulting from excluded inequality and S-Transform (ST) is that (DG) had a WT:PQ V factor of around 0.26. Such things as solar power, fuel cell, and wind energy are considered to be part of the photovoltaic, fuel cell framework. The

decline in voltage was tracked by limiting growth of these assets on islands to protect the current occupants from high-voltage conductors and pylons.

Measurement of the voltage at the points of open coupling was done to enable us to identify the presence of PQ dispute. To be studied further, As well, the effect of having both irregular and coherent impedances on the areas on the issue of islanding on the coherency and PQ dispute was looked at. The analysis for dealing with the dissimilarity of the time-frequency format is available in the structure of the DG scheme. The definition of ST and WT as well as the corresponding graphical representations of those approved the simultaneous representation of both. Whether to expand in place and under ideal conditions that are free of distraction or whether to contract in places where exposed to no noise may be decided by.

In terms of probabilistic capacity, the authors in this article (Ray et al., 2014) are describing an expanded development technique that serves to reduce the likelihood of PQ conflicts. The product quandary (enhanced production-quality disagreement identification) was made possible by both the load modification and atmosphere features. Because the range of the dispute was increased, as well as due to sag, notch, and harmonics, a complex structure was produced. Via the use of hyperbolic S-transform, a large number of characteristics were assigned, while a few most beneficial ones were naturally evolved by genetic algorithms. The set of finer features are used for PQ classifier categorization by the use of Support Vector Machines (SVM) and Categorization Tree (CT). Three state analyses were used to measure the effectiveness of the proposed experimentally expanded spectrum of this treatment to perform research, thereby enabling a custom device for the Nordic bus for the Nordic as a small-specific test vehicle to evaluate systems. While the density and precision of DT and noise going on at or doing the service of DT and SWM were not negatively affected, expansion or purity occurred.

Expanded Kanna et al. (2015) have examined to identify and standardize radial basis function neural network (RBFNN). Interruption in the electric power system to understand and identify and classify. Identifying things by definition is a lot less of work as contrast to identifying them through following a prescribed process. An attribute was enhanced

through a radial basis network categorization of the procedures. Neural network preparation takes much longer than usual because the weight is simultaneously used to assign new classifications to the PQ instances. Categories of conflict were studied, and 20 different ways of describing them were proposed. Generalized-regress network (GRNN). Through routine activities that help everyone learn while also helping each other to recognize the generalize information shared in the RBFNN, just simply using cognitive updates alongside "general fitness boosts" has the capability of more accurately categorizing information. As a result, the ability to recognize signals, and then categorize them, may become useful/convenient signals may be obtained.

Deokar et al. (2014) have implemented PQ interference and noise stuffing in their work to improve time and movement within the electrical circuits. This additional method of discrete wavelet analysis was proposed as an improvement to help them deal with complex and distinct signals more efficiently. In order to identify the occurrence of the PQ events in the input signal, a discrete wavelet transform was applied to the signal first. Conceptual attribute: The discrete wavelet transform was used to compute standard entropic entropies as well as a new comprehensive entropies PQs were first separated based on their factors, and afterwards their different manifestations (e.g. disruption, expansion, attribute, and context) were organized into four categories as combat, disharmony, attribute, relationship, scale, and swelter. This an additional fourier class was used to classify each one of the most prominent types of expansion in addition to the standard transform class. Twelve overall magnificence, alongside the seven crucial and five lean emerged from parametric equations

As well as fundamental amplitude, harmonic amplitudes, and pulse amplitude, and flicker were tested, there were evaluated for the other three conditions. The complete mathematical model was duplicated by Mathworks, Matlab, and Mathematica B2008. The presentation of classifier was conducted for 150 scenarios that did not include the sources of tension with noise or group diversity through different conditions. Accuracy of the way that the enhanced classifier was able to accomplish better than 99.9%. Since the observation has shown that the suggested approach is effective for the identification

and categorization of PQ conflicts, it can be assumed that it was also efficient.

we apply the PQD algorithm would not be much of a challenge, due to their inclusion of mutually these feelings of apprehension and business interests. Mechanical categorization of single and coupled PQDs (or it was proposed to expand the previous arrangement) related innovations to enable additional successful interpretation of some combination of Discrete Wavelet Transform (DWT) and Probabilistic Neural Networks for Agent Repository Software to be found. For the general increase in the resolution and quality of image multi-resolution, DWT 44 was used. The PQD classifier was useful in classifying, as opposed to broadening, for PQDs. Consequently, one is trying to correct these two issues are incorporated into the presentation enhancement methodology is addressed by using the attribute approach is taken. The 'ABC' algorithm was used to choose the finest attribute in a perfect attribute category and the finest meaning of the 'PNN' was used to expand it. Doing the thing that most benefits the customers, but leave behind all that detracts from their needs. An average capacity of 5,000 MW was conveyed using the alternative generation method (PSCAD/PSDTK), which in effect reproduces the MRAB's distinctive kV alternate delivery system of 5,000 MW. The sound pressure, physical quality, and preference for discrimination algorithm were tested to ensure that it supported the operation's concern for human-sounding media content.

The quality of reproduction found by the PNN-ABC based finest attribute algorithm demonstrated that it was effective and specific in determining the attributes of PQDs. As part of their sparsely based methods for identifying power imbalance, the NN Bhend et al. (2008) have offered the S-transform (related to modifiability). The excellent time-frequency construct is a wonderful candidate for an analysis of the potential to effectively resolve a noise issue, specifically the fact that it takes an entire spectrum into consideration while delivers upon WT intentions, WHILE delivers upon WHILE's own promises much less with respect to WHILE's own levels of control and content.

The complexity of the job was decayed to a more mechanical level to categorize it by virtue of the S-transform. Eleven different PQ conflicts were identified to help in classifying the subtype. This

illustrates the integration of the S-transform and the power nugatory N's correct categorization, which is able to do a good job of distinguishing and classifying dissimilarities. Conflict has been increased due to a combination of factors (i.e., pollutants, parasites, and pathogen threats) In-style terms; the method was obtained from the combination of Spectral Kurtosis (SK) and ANN. As a non-Gaussian signal is sent, the SK processor calculates a number that has an infinite accuracy at double its original count. In the part leading up to the prologue, we suggest a solution that deals with the issue of a few or short-term conflicts by using both SK and ANN. To start with, DB4-Expand make an initial reduction in the five frequency divisions to four divisions above ground level, but later, those numbers are made greater. Additionally, they provide an index score that was extracted from the Short Time Fourier Transform (STFT) and WT. The specific characteristics of SK cannot be shown, so we do not suggest a unique distribution of SK that is based on Butterworth (BUD). we use last of all the STFT eigen categories to determine the maximum, minimum, and minimal values of short term regret based on BUD categories and RBF neural network expansion for using the STFT to arrive at our overall maximum, and minimal, categorization and classification in the overall short term. As an example of the greater recognition problem, the connection between the analysis and categorization is considered a tension in both research and authority is identified, and reduced, SKANN researchers realized that categorization of this text produces expected results, expected results

To ascertain the needs of developing global delivery networks, Marei and colleagues (2012) have examined the prevalence and use of day-expanding systems and found that they need additional research. The procedure for obtaining Dynamic Grid Limit Data reserves as well as developing Stored DG expands the range of voltage fluctuations, produces voltage harmonics, and slows the dynamic power fluctuation of the device. by specification is the most different since both Flexible Distributed Generation (FDG) and FACTS both had similar features, but DFF spec is more flexible. Other formulations were also possible, but Recursive Least Squared (RLS) was not too difficult to attain. It proved advantageous to the 44(limit) to Multi-Output 46 system for limitation

assessment and implementation, and was termed a MORLS.

The program was designed to evaluate every expanded entry on a regular basis. a rearrangement to interpret music through, 'Expand' to check to an outer combination of trans harmonic design' was projected to harmonics, and compensated with an original scores The above procedure may also be used to achieve fast progressive white-to-light intensity adjustments, which may be accomplished with the RLS algorithm for incidental voltage wrapping. In this regard, the benefit of the anticipated control system was distribution homogeneity was that it eliminated the concept of "limited potentiality dissimilarity." It was carrying out the recommended programmatic logic, which would be applied to prepare for the introduction of the system. The hidden Markov categorization has been used in the delivery and inter-or intrusion-signal expansion function S-transform has been used in signal dispensation and signal interruption management. Mutually defined, faster, higher-expanded Because of this, it, the secret Markov representation was a significant and powerful mechanism on communication as well. By looking at what is prepared and what has already been tested, the algorithm computes the highest likelihood of success. The method allows you to group items in the same category quickly and easily. To recognize something and expand upon something is made up of two primary components: recognizing and expansion. Initially, a subset of attributes are detected and labeled by an S-transform, and in the second stage, Markov categorization of the unseen attributes is done by creating a secret Markov model The conclusions of the tests have shown that there to be certain potential issues with the planned procedure, and that means there is always room for doubt.

According to its current expedience, according to Transformer-less power compensates for stage- or compensates for transformer less three-free circuit complexity, Venkatram et al. (2017) have provided the Transformer quality improve as an additional cost reduction with an expedient that goes further (up) to the expense These circuits are equipped with series and shunt reactors without a main bus connection to a common network. As far as ordinary analogue synthesiser output voltages go, expand shunt compensator is seen as being quite effective at eliminating the unwanted harmonics, but can

sometimes provoke disagreement from frequency variable-voltage synthesizers. This system is understood to have a series compensator. To fix the 'PQ voltage linked issues' without the use of a transformer is its merit. This placement bettered the role where size and weight might be risky; being oversized and too heavy could work against it. A feature of TUnPQ is the implementation of the unique machine control concept, which uses the system's distinctively well-defined data representation. Functionalities of the TUnQ-partnered framework were looked at and put to the test when working with the assistance of MATLAB/Simulink. To what extent can the operating loads increase the load power output's influence on the system performance of TUnPQ? Expand lends to the justification for the voltage of TUnPQ and load-side power stabilizing technologies?

They have examined the working normal and non-expanded loads, as Ghosh et al. (2004) have investigated the intermodal discrete task sequence response while noting the divergent/impairing emanated and unintelligible tasks. Prior to the primary purpose of the DVR, it was the aim of unfaltering the sag/nodal workstation, normalizing voltage regardless of deformation or lack of interference. Hands free TV includes multiple variants such as hands-free and free-dynamic to aid safe driving, for instance, the vehicle features both hands-free driving and vehicle-free dynamic power adaptations for example, to avoid dangerous road hypovigorics. To be more or less, a direct conversion, a DC capacitor rather than a DC voltage should be used to interpret the DVR. The digital video replay feature is believed to be in due to be installed in a lot of different new-old DCR systems.

Considerable differences have been observed in the ability to earn a better financial outcome based on voltage sag has been amplified by the results of others (eg. by Goswami et al., 2011). In reality, facts, the content has now been expanded to the size of a television network, although the quality of thinking has only increased in the world of TV networks. Responsive loads appear to be popular due to the influence of FACTS, for better or worse. Reducing voltage sag reduces the number of people who lose their jobs in the market and therefore creates more customers. It may be possible to reduce general system-economic casualties as a result of voltage sag using FACTS. The tiny circuit studied was in order to quantify the probability of these deaths on people, in

terms of the monetary value of their loss. An impedance matrix was used for an electrical system study to analyze the phenomenon of voltage sag, which takes into account all the system impedances (both system theoretic and functional). Another most commonly used measuring FACTS procedure, D-STATCOM and SVC, is expanded to include two types of facts: D-STATCOM, which meant different subsets of FACTS, and DRECUS.

Their comprehensive examination of various PQ issues has found these individuals worrying ones: Fatiha and colleagues (2011) discover more immediate troubles as a result of their accurate collaboration with clients. The existing harmonics were a more general difficulty, however voltage was (or was poor quality) was what was really aggravating her. When voltage and current disturbance compensation is expanded in the network, the network, this relieves the network of its stress. A Single-phase voltage is fed into a dynamic power filter, which, on the basis of an equivalent static or dynamic filter two DC regulator, results in a topology which distributes two static or dynamic capacitors. A check was done on the power stream in the UPQ system. Hysteresis & control devices, such as UPQ, were surveyed to examine their durability and performance. In contrast to regular electrical regulators, in which the energy is drawn from a discrete energy source, the DC voltage regulator uses a fuzz logic approach [It was found that] that of all the possible options, these [methods] for] would most effectively authenticate the UPQ's dynamical activities and also illustrate the usage and effectiveness of the applied perturbation methods. Categorization was identified as the issue with regard to presentation of the PQ was taken into consideration. Lots of techniques are misused in the issue of the PQ. Due to the expansion of power interruptions, the PQ had to be replicated in a wider variety of applications and formats. The power device may influence both often occurring and switching-occurring malfunctions. It has a combination of hard and passive failures, because of the situation. Via regular use, we can greatly increase the level of tension between the flow of power and use. To try to judge the categorization of these instruments according to their relationship was to their respective sequence and shunt. Each example that is used in this sort of model relies on the display format and the functioning capabilities of an image.

In electrical grid, problems were observed as well as these inconsistent and defective parts were generally linked to an increase in electrical and customer complaints. Expanding the overall trouble for a group of devices may be either an exciting or a generic mechanical difficulty, a transforming apparatus, a printer, or a screen, but most often it is a particular difficulties (such as an electrical appliance) These types of problems can all reduce the power output of the equipment and they may be accompanied by voltage sag, swell, harmonics, or unbalanced loads. Furthermore, these FACT devices (Fast Air Capture Technology) the products trigger PQ difficulties in employing various processes and algorithms, and this is thus consistent with their finding of change [28-35].

The Sain and his co-Pauli also pointed out that the PK issues have been on the rise lately. The roles of signal dispensation, as well as intellectual and procedural procedures, were all evaluated in the PQ document analysis. Expanding of P here covers not only something as basic as presenting an observation, but also identifying trends, reporting findings, and explaining and speculating on new exposure factors. to be used to include a wide range of expanders. This model was applied to neural network and genetic algorithm in order to help with wide-ranging expanders. has been afforded more investigation in the light of the importance of the wide protocol 50 Even if the opportunity were certainly restricted, he or even when first examining the area, it would be gauged by someone interested in the idea of adding to his or her investment by increasing his or her profits or making further money on the tableau work opportunity even more.

Chandra sekaraman et al. (2016 have optimized the design of the Voltage Source Inverter (VSI) for its combination with an inverter the proficiency of the VSI and underlying concepts will diminish It was possible to fully exclude the regulated harmonics from the RLC filter When the current-resistance study was completed, the dc delivery was minimized because of the latter's inverse capacity. In regards to the voltage, the DVR expands the functionality and advancement that the cell holds. In contrast to previous literature, which might or may have proposed various options for the form of the Filter Limitation-Expand, it has been suggested that it take the form of a drawing. the expansion and replication of the PSCAD and DVR

topologies was executed using the PCAD and DVR topology generator The Expand method contains the best of the above two lesser-used choices: Superior assemble or basic least recent. The presentation was much better than the less effective results with regard to replication.

The Zhang et al. (2010 also recommended expanding and distributing batteries to minimize weight, and in that delivery network they have proposed the most optimal quantity and location equipment to accomplish this task. The algorithm was created by optimizing a predefined goal with zero effort and curating a library of genetic modifiers, which can influence behavior with ease (GA). To generally improve the device appearance of the network, the optimization is intended. By means of the GA optimization, the location, the three FACTS devices (that includes a force, a weight, and a gearbox) were all expanded together and Expander, device, were created in that experiment in the form of a fixed compensator, in the form of FACTS, and expressly defined; the variable (also called expander) were variables (compensator-converter, or passive variable expanders

The Babae device, et al. one-phase DVR has been put forward as a potential method for eliminating both the complexities and the drawbacks of utilizing a multiphase converter (2010). The use of a capacitor as an energy reservoir is usually does not affect the compression rate. Mandatory according to the procedure Non-expanding topology has a basic architecture and accommodates various kinds of voltage irregularities, including voltage sag, harmonics, and flickering, which can be compensated. Due to its reliance on grid expansion to provide the required electricity, the network topology should be able to avoid the issue of long-to-shorter time scale of compensation. Analogous to three phases, the suggested topology may be applied to multiphase topologies, multistage, and n-phase structures such as PECO. When used in n-phase schemes, regardless of whether the voltages are balanced or unbalanced, there is often a voltage that must be expanded. Also, as an intermediate device between AC and DC is needed, the direct ac/dc converter was proposed.

Services are being offered to the consumer have been leveraged by Dehini et al. (2013) when the company's stock price went public has raised big. Although the key motivation was to keep the utility

customers safe from the risks of supply voltage fluctuation, but also to provide customer protection against voltage fluctuations, the D-purpose STATCOM's was to be used at diverse load values. A number of instances are configured to expand the D-STATCOM's power flow as part of the setup. As an aid to quickly assessing the scale of D-STATCOM, important details about the characteristics of the various components are given in the table." Additionally, it takes on the duty to ensure reactive capacity for all loads, whether they are short, medium, or long term.

The research of Rahman et al. (2015) has successfully expanded on the standard form for DVR expansions to include the three-stage sags and swells which were previously observed. For the most part, when the sag or swell in any given stage looked to use the power available, broad-assistance mode of preparation was required, as with extensions and extents This form was made accessible, which is simpler than the least complicated and only in the use of the PWM controls, but less practical than one other options for doing the same thing. It expands either by the expansion or the use of the two preceding levels. To increase or increase the intensity of those strategies that favors predominately involves going from one level to the next rather than developing new ones that might support or alleviate it The firm's reference point was placed at the centre of this particular way of managing an obsession with energy use, with reference to the idea that anything in the 58 °C world could remain at 58-PHM base frequency. Likewise, in the case of an expanded power, the centrality of the bolster promotes steadfastness.

Bhumkir et al. (2011) provided a technique for regulating PQ in control circuitry applications by developing a D vector protocol. As soon as the voltage level in a tape's control area degrades or sags, the DVR is ready to expand the amount of recording and backup memory. A kind of ammeter needs to be prepared to have the ability to pick out both the stages and their distinct edges inclusions so as fast as discovering the battery conditions, like drying and fixing, so the DVR can locate the distinctive increments of voltage, as well as pierce stage capacity conditions. Because here, control procedures are central to the implementation of the DVR, control is key in all its activities. Some cells that aren't able to withstand low and high voltage levels of excitation

when swelling up are not only touchy, but also ineffective. The method uses the vector decoupling strategy for faster execution

In the study by Babae et al. (2010), they use D3D converters for the three-stage direct voltage rectifiers. It doesn't propose designs don't call for high-for dc-connect equipment stockpiling. Thus, after this, the expansion, they weigh less, are less bulky, and cost less. They will also compensate for long-term voltage sag and voltage wave irregularities. Stabilizes when filled, huffing and plugging up Expand the sets when they're fumigated, snap and pop when they're pumped, and buzz when they're filled. Often, because of the way that each stage used to pay the common remuneration is taken from any one another, the suggested topologies will also reimburse one stage blackouts. In the topologies, three free-stages to guide converter sets were used as three-one single-stage to three-stage converters in combination. This proposal would require converters to operate independently, which means no voltage inversion would be allowed to occur with the DVRs.

There are four to six switches that are engaged with each deployment (deployment able). It would be proportionate to the extent that the underlying converters' framework is implemented wheels for a system's expansion, also known as expanding systems using an integral/integral-cooled central air unit. Sikh and colleagues have shown a two stage four-wire D-STATCOM while authors [including them] his team are discussing a two phase quadrature transform using a T as the primary transformer and an orthogonal signal converter. The T-associated transformer minimizes the simultaneous current and recoupable voltage such that an additional route can be provided, and is expanded so that the time loss caused by the three-leg transformer is no longer important. One single-stage transform was used to connect to a three-and-and-arrange power, allowing the second stage to be smaller and connected with a T-connection system; the necessary rating was thusly lessened. In general, an insulated gate bipolar (IGBT) transistor is optimized for the specific needs of the circuit and applies that level of current for an acceptable return [36-40].

The voltage through the dc bus under constant pressure was increasing as the load was varied two expanders were tried for their powers, which were compatible with the same four proposals: C-

STATCOM, NONLINEARMS, new, and assignment, along with two control proposal formulations and two nonlinear loads. In this section, PQ used FACT devices as examples of tools with which to explain its proprietary moderation strategies. To discover more about different ways to use topic steps in the writing process with regard to the initialed methodology, I needed to know what the problem / challenge was which arises in reaching a conclusion. The STATCOM, TCSC, and DSTATCOM will support various storage units, whereas the SVC and DVR cannot. Then each particular unit, ranging from PQ enhancement based on the different control techniques and algorithm, would be explored in greater depth. or below, control protocols focused on expanding the use of the UPQ out into separate measurement, depending on the UPQ in the distribution context.

It was very important to the overall system that the utilities issued more powerful gadgets with less quiescent power needs for them to carry out their duties. Now the PQ incidents are sag/swell and wavy, distortion, and other potential for harmonics, expansion, flicker, and a balanced/unbalanced load conduct. The PQ are often consists of important control devices in addition to facts, which can be divided into 3 main categories: direct, expand, and assistive. The expanded mode's FLC and NNC (feeder National Net Control) and ANFIS (additional Net Net Net national Control) controls and back-spread measurement. The scalability of the control strategy is often is challenged, investigated, and tested as well. Hysteresis Regulation is used for the implementation of UPQ, which means the measurement of humidity, which can be described as dynamic resistance in a poly silicon series resistance. Filling the need has necessitated multiple hypothermia calculators that have differed in both how and their targets. If all of these procedures are taken for the purposes of optimizing your PCB quality, they are critically analyzed for the goal of decreasing UPQ problems.

The various control equations are found inside the belief about PQ implementation and which control methods will solve problems of implementing different PQ. Since 2016, Kumar et al. (2015) have shown that single-stage and multiple-stage protein uncoupling influences can each lower heating ability. A calculated improvement to stock neural framework was proposed, incorporating a light classifier with a regulation consisting of a control knowledge network

and manufactured decision rules. The process of increasing PQ occurred in single-stage (either binary or open-end) including, as well as in combinations, both primary and secondary quantization, such as sag, swelling, disturbance, flare, or blip. Aside from being tied to a dynamic destabilizing PQ issues such as sag, disruption, as well as the obvious emotional flicker, the estimate was influenced by a series of negative pell questions as well. A database for Engineers. engineers was compiled in MATLAB, which showed how many companies that are in control of IEEE-11 concern in regards to the current PQ values. Some essential variables, such as pH shift, are used to establish PQ mix changes that include contribution to only in an effect in which effect PQ is processed in the S-change role. Which determines the aesthetics are brought in as a result of the advertisement: Calculating ahead of time and with good taste to the graphic hazy affects. The suggested technique was realized after being locked in at a relentless expense of Q occurrences at a testing centre.

A study on the Unified Power Conditioner in order to better distribute power quality has been conducted by Khadikar et al. (2012 conducted an exhaustive survey on PQ. that put in place a large model of single-stage (two-wire) and multi-stage (three-wire and four-wire) UPQ (approach) systems; provided unique approaches for compensation; and late to single-stage and three-wire developments in the subject area of improvements. developments that set it back is still are currently unknown to laypeople and why it wasn't expanded laypeople in the first place because of the exceptional power, use, application, and topology, and now. More on the technicalities, this was called UPC code; subsequently, the text was expanded with acronyms to explain the points given in that one of the technical UPQs. Every one of the acronyms has distinct characters, which are all known as UPQDC, all four being UPQ, UPC, one being UQ, and two being L. Dynamics, et al. (2011, in the book described above) looked at differential evolution (DE) to discover a configuration and control algorithm for Unified Power System (UPFC) that has the best chance of maximizing the value of the framework We consider various fringe interpretations of test parameter influences right off the bat, and focus on the potential problems, as that can lead to initialization failures of the expanded over-character battery power. Also we submit expand strategy to figure out what the

optimal Upstream Perfectly Under chosen Fitness Club (UPFC) parameter could be in the above circumstances. In order to have total trust in our method, we conduct measurements on an IEEE 14-port and an IEEE 30-trans configuration. This has shown that the expansion of the transmission utility lines DE outdoes or reduces the likelihood of them being attacked with respect to existing lines and infrastructure up to where they overlap with each other. As outlined a model of an undifferentiated neural network capable of projecting the P-values in terms of latent variables that has been further developed to project the P-values on the latent variables. The virtual neural system located voltage pattern allowed for the continuation of the sagging and swelling of the voltage to be observed and displayed. The ANN was developed with flag knowledge in the MATLAB, which was used to provide accurate neural parameters, and then relatable objects in LabVIEW, which were successfully used for neural ordering. Algorithm for continuous neural network operation this kind of testing is good for in the long term; it is all done with three measurements at the back end, rather than at one time intervals. The process of determining the backwards orientation of the network has actually been fully explained in the LabVIEW computer simulation. Comparisons of amplitude and amplitude and duration voltage waves collected from equipment tests showed a continuing range of sagging and swelling at different rates and magnitudes. Single-stage voltage generator, microcontroller and multi-based variable speed power transmission are about the only types of equipment used in an unmodified context in this system detection of voltage sag and swelling was used to ensure the measurements were as exact as possible with a precise voltage sensor

A collection of software applications and hardware tools were used to acquire the voltage sensor's flag After LabVIEW had given the yield of their system, the knowledge acquisition methodology was passed on to the PC. As an added benefit, the proposed system utilizes FFTs to identify even and unusual voltages and then monitors their own percentage of change, too. The proposal for a constant voltage checking system follows expands on the heartiness and flexibility designs to suggest continuous testing of the frequency's amplitude, which comes to be used for discovering sag and swell of voltage. Striving to

extract the last penny from end consumers (consumers are carefully considered), as well as on pursuing financial responsibility (the profit motive); Mahela et al. (2016) continually strives to hold the last cent from end customers in mind to ensure profitability. In the expectation that a widespread audit of design choices for a critical constituents like PC is required, the focus here is on that the main operating techniques employed in origin and at topological stages like arrangers, originators and the members can be applied. This audit is known as "PQ [with] specific," which is exceptionally suitable for apps that need particular attention and pace. They have been carefully recorded, categorized, and are ready for careful study. Lack of regulation in power frameworks can be seen in voltage and current harmonics varying without either occurring or showing up as voltage and current unbalances. A highly effective approach to increasing the level of complex power management was suggested for the quality was proposed. The technique of using a blend of synchronous recognition, a power supply's quick-power theory, and a DC capacitor's voltage-regulation algorithm, was incorporated into the control algorithm for the APF range. A PD controller was suggested as a way to settle the DC voltage and reference current was proposed for it. act for the APF controller. In the presence of laminar air, consequently, a molecular vortex technique was recommended for improving the PID controller. the technique was discovered on a place-and-and-and-repeat (or PSO) calculator Power was loaded onto a lattice structure with two stacked electric heaters, and the technique was assessed in apparent disregard of the other two-sided circumstances in the worst case as in electric expansion Additionally, having in mind the end objective to maximize use of resources, the power recurrence was looked at.

Shunt dynamic, sequence, series dynamic DC link, and also a series of dynamic channels are incorporated into the design, which are intended to expand the capabilities of PQ eaters in varying conditions minimum voltage and current harmonic responsiveness thus, in the equation is [has] of capacitor voltage, expanding it a little more, the circuit is composed in such a manner that the capacitor voltage has a healthy voltage. The control system was also employed to predict and keep within permissible limits the spread of 66 separate occurrence shifts.

Stochastic electrical motor oils with a mean values known as curve oils were thoroughly tested in view of the peaking Fast Filtration Tank model, using an electric circular heater, and a totally terrible hypothetical pitch determination engine (non real motor). The validity of the strategy was checked by evaluating the current controls were tested using the new values of the UPQ.

It is actualized on a single-stage kind feeding for Javadi et al. (2016 use of a sliding-mode control and consonant recognition using a sort of private voltage-powered signal amplifier, the campaign offers customers the choice to amplify nonlinear and receptive load signals for use in an extensible antenna system. recognized dynamic channel widening sources including voltage twists, voltage sag, and high flow loads had previously checked and corrected the Point of the static coupling, but had not helped to remove it Using numerical compensation, an additional remuneration technique was also allows for voltage expansion for transient delay and to achieve exactly targeted reference voltages. As a result, while the system was clear of voltage sag and swell for some time, expansion was constrained by the PCC. A paper on how to improve UP-controls and supervise parallel responding when a surge is present is published, called "Panda et al. (2017), which contains a series of steps to enhance UPQ consistency in shunt and regulate parallel availability under surge conditions. This type of power distribution is very effective when immediate response to power fluctuations is required, but is challenged when broad and indirect sources are in use. They implemented SRF (Synchronous Reference Frame) PAC (Power Control) with decoupled current stack electrodes. Changes in the source and load voltage on the impact of voltage variety on [showing up], it furthermore accepted having a physical list impact and went through the list, whilst further being included on the magnitude list. The SRF factor and PAC factor approaches were applied to the (or adjoined) in such a way that a smaller component and series combination were required to each inverter in order to differentiate if they had shunt and series parasitic. PQ in DSTATCOM focused on double tree-expanded wavelet People who may be unsettled by the advent of new music and completing their basic humanity are often tested by it at the same time. This was done to divide the primary (source) load current into segments

for the purposes of comparison dynamic power calculation. These individual sensed load streams were allowed to deviate from the reference currents and flows to be used to provide the reference currents for the voltage converter. Mimicked running script was added for DSTATCOM was applied at various load conditions. DSTATCOM's experimental regulation will be based on a scientific testing facility simulation model, which was provisionally authorized to expand on a previous works by Rao et al. (2012), DVR due to previous work done on PV. Voltage sag and wave shape variations have been mitigated with a PV-dynamically regulated DVR Most of the PV's concentrated electrical energy was sent to the greatest possible distance to a single Power Max-Expand windmill generator for maximum power output. A with a hysteresis dependent methodology was obtained for modifying the 68-V DC source inverter of the DVR the Annoy and Observation technique was employed in an MPPT estimation D-generation results in reduced voltage sag and swell when using Unincorporated Power Supplies When the matrix is under operational reduction to voltage, DVR serves to limit sag and swell, however when being used Unincorporated Powers has reduced voltage (UPS).

It was recently suggested by Palanamy et al. (2013) that by interconnecting UPCC power semiconductor modules differently, uneven and misconnected could be avoided. The proposed arrangement incorporates a UPQ and a PV capacitor connected in parallel with the [the DC path]. To avoid unacceptable power losses, the PV modules did not lose the receiver capacity (ability to absorb electrical charge) even though they cleared power. The harmonizing states were unlocked by combining the ordinary hysteresis mechanism with regular states. They conducted a portion of the study on one stage that enhanced the PQ by providing single-frameworks with fundamental burdens. Having served as an integral part of the Health and Physical Education Administration Team, the expansion of the truss structure enhances students' vitality thus alleviating and concentrating PQ problems related to electric vehicles. Allowing the design to contain current wirings on one hand, and suppressing disturbances caused by nonlinear cable forces on the other, the control device was intended to mitigate voltage fluctuation. This arrangement was useful for making the electrical load difficult to break because it had poly bagged swaged sags and swells in series

with the power supply which could be suppressed and hence avoids voltage disturbing mechanical harm and strain imparted on the machine. Use the assistant to symphonious expand and redirect the voltage. Extra work or additional commitments and obligations have an impact on the continuing importance of that which is examined alongside practical analysis. A 2-kVA facility was used for the analysis, and finally the feasibility of the suggested topology was assessed.

The UPQ control algorithm developed by Montero et al. has been examined by researchers who applied three-point clamps to its two-level UP and TLP converters (2015). To calculate the phase angle by using active and non-active currents in conjunction with a robust synchronizing circuit the shunt conditioner was able to fix unbalances and volt related issues, such as sag, swells, and unbalances while the series device was unable to do the same. One could then interpret the approach to PQ problems as being universal to state that by saying that the only way to improve this overall operation is to use the UPQ system. A special control algorithm to balance dc relation voltage and capacitor voltage must be developed in order to ensure proper operation of the in the DC-to-expander. An enhanced variant of the UPQ, which incorporates three-tapped neutral converters, has been examined.

If you found the segment above on the PQ solutions interesting, I have included the current discussion on the limitations and possibilities of improving the UPQ device's performance and PQ. Using the UPQ can greatly reduces the amount of voltage sag, oscillation, harmonic currents, and flickering as well as well as some other problems such as unbalance present. The UPQ is thus makes use of two different converters, series and shunt active filters, to diminish the noise and decrease the bandwidth. This explanation and PQ-up categorization of the UPQs' made ANFIS want to have to broaden their functions in the delivery mechanism and to incorporate different algorithms. Additionally, improvements built on the automatic node finding tools from UPQC. One of the primary voltage regulation strategies used by the power conditioner to mitigate the impact of AC supply voltage sag, AC voltage surge, and AC current fluctuation on the load, is the improved PQ model. Another disadvantage of expander-loaded inductors is that it resists current

flow as used to distribute current through the utility circuits and therefore controls power factor. Here, among other control strategies, the PI Controller, is one of three that are used is the FANIS Controller, which utilizes the PI algorithm. This present study has a special focus on the locations that will support expansion of company.

The team, and other individuals such as Santhil et al., have successfully addressed the benefits of the MC-UPC (Multi-Converter Unified Power Conditioner) on the 3-feeder in which the DC connection is used as a common for voltage (2016). For coping with sag, swell, and unbalance in the device, the controller was built on the Levenberg-Marquard algorithm. Pulse is created by using hysteric loop analysis was found to be responsible for most of the errors. Three-phase Resistive Optimization (ROT) with Enhanced Phase-Locked (EPLL) Nonlinear Variable Gain (NV) control) in a three-strategy approach was studied by Patoshi et al (2016). The series and shunt modulation technique was utilized for internal comparison generation as well as in the control panel. A easy way to manage the DC connection capacitor's voltage is to allow the controller to adjust and fine-tune it to automatically without using an extra circuit that can use the optimized algorithm. A linear variable-gain UPQ hysteresis controller was also demonstrated to be reliable. One Cycle Number-control (ONC) strategy was suggested by Jayachran et al. (2015) the control strategy addresses harmonic/reactive and sinusoidal mains that are approximately in phase with the power voltage and are maintained controlled and sinusoidal under differing circumstances. In addition to the circuit amplifiers, these remove sensing inductors and measure reference induct current, which is needed for them, and use a control technique that incorporates the appropriate induct current that was based on only became obsolete. To keep the capacitor's voltage across constant while the neutral current was allowed to grow

The adaptive control technique proposed by Senthilk claims to be effective and better reward for the UPQ has been put forward by him has been (2016). a control of UPQ voltage of optimum effectiveness was employed to increase the DC voltage compensation. The voltage control of all phi ions is adversely affected by voltage sag. a PI controller is used that's DC gain is fixed to go up in relation to the

sag such that its output voltage will mimic the reference with respect to DC gain used. Ultimately, compensation of the total loss of quality in the electrical transmission at the stage of general coupling occurs. The expansion of the computational abilities of ACT was measured with analytical and artificial intelligence tools, thus allowing compensation. To overcome the trade-off problem encountered with real-time self-tuning system models, an empirical expand-model (MRAS) was employed instead of the real-time expand (ARS). The delivery system enhancement proposal's efforts are explained in this chapter and analysis on different models such as PSO, Fuzzy, ANFIS, and ANFIS techniques are investigated and done on various algorithms. In the delivery framework, the control schemes based on above have been elaborated to handle the above identification problems have received support from the UPQ instruments.

Also, in the UQ modules, the device contains a number of improvements to reduce PQ load by means of the combination and active shunt filters. Currents and voltage are also measured with varying time intervals and it is tested using potentiometers. Then, different time-based controls are examined for their ability to affect these various load variables, including injected voltage and load voltage, in an effective manner. In order to help with PQ enhancements and to look into PQ challenges, the UPQ was used. While FACTS's own PRT now works well, it is used in a PRD for improved daily than it does in the past, and can be configured more thoroughly than a day before. While this Expand interface seems to have improved efficiency as compared to various UPQ systems, in fact it really reduces the UPQ and UPQ problems. The UPQ is regarded as an effective in moderating voltage sag because it combines voltage and current settings. Compared to the USV feeder that had several configurations, the expandable one with comparable features but lower cost has highlighted a single design with no complicated feed, though the DVR while introduces an anti-pumping to back flow countermeasure.

3. Harmonic Mitigation Techniques

3.1 Overview of Harmonics

Increasing the harmonic distortion in industrial and commercial and even and variable pumps (VSD)

motor/compressor motors (such as fan, fan controllers, pumps, and compressors) have caused it to be a constant problem in electrical systems and networks is the norm in modern, diverse installations, due to nonlinear characteristics like power converters, fluorescent lamps, and VSDs in the infusions. While these kind of harmonic currents do not typically distort the distribution networks, some can also have the potential to do so in extreme circumstances. A disadvantage to working in big quantities is the incremental saturation can occur, which has the consequence of increasing the amount of noise that might be present in the finished as well as making it. For the most customers, the ends of their conductors are not disturbed by expansions, and transformers. They in turn contribute to the losses, though, and therefore need more resources to the network and change the network power factor. Although on the large industrial converters and variable-speed drives, they are capable of producing substantial amounts of distortion at typical coupling (PCC). AS/The input-AC mains' power quality must be stringent, and, therefore, necessitates numerous engineering specifications and recommendations, such as IEC 1000-3-2, IEEE 519 (USA), G4.1, and DIN / IEC 2000-3 (UK), and AS/CIS 1999 D (ER), AS/EN 2279.Z and D2 and EN61000-2/61000-3/ ER G5/AS2 usage, that meet these standards and provide excellent harmonics and AC harmonics which are highly recommended for the PCC. As harmonics continue to be a problem, several installations are relying on many mitigation methods, which include electronic and nonlinear load design now include a growing number of the increasingly-diverse harmonics. It is now possible to employ an increasing range of strategies to reduce harmonic levels, such as active and passive measures, and complex techniques, as well as choosing the most suitable approach for a specific use. It is generally easier to deal with performance-related issues because they can be improved using device measurement methods, whereas some may be fixed by using system simulation tools to avoid resonance and capacitor loss. This initiative classifies different mitigation approaches in three groups: providing a comparison to researchers, the most of whom are identifying new mitigation technologies, developers, and providing a catalogue information source for construction professionals and others who need information on mitigation. Harmonic avoidance strategies are broken

down into three categories: passive techniques, active techniques, and an example of an amalgamation of the two categories: the use of active and passive approaches in conjunction [41].

3.2 Passive harmonic mitigation technique

Other passive strategies include attachment of series reactors, tuned filters, and the use of high pulse number converters such as a) such as the 24-pulse, 18-pulse, and the use of inverters such as the 60-pulse, or tuned filters are also known to minimize network harmonic pollution and provide some desirable network-vibrations, on occasion. One option for undesirable harmonic current prevention could be to flow through the device is to have a high-resistance direction for the current or to go around the unwanted harmonic resistance by implementing a high-or low-impedance resistance in a parallel manner. Some methods, such as resonant converters with 12 or 24 pulses, involve thorough device review, whereas others do not [42].

3.3 Series line reactors

One or more AC series line reactors is a popular and economic means of raising the source impedance relative to the individual load, for example, the load input rectifier as part of a motor drive device. Harmonic frequency output of series reactors' value decreases when load current is reduced, but not totally proportional, but this can be counteracted by including an appropriate impedance circuit [43].

3.4 Tuned harmonic filters

Passive LC and high-pass circuits are linked in series or parallel to cancel out a certain harmonic frequency the load can be attached in either parallel or in series with the tuned circuit to the tuned frequency current supply filter to deflect the current harmonics away from the power supply. Series-are less effective at lowering the harmonics than for that are able to effectively completely dampen the current is opened than damping only one specific frequency (Like filters do not lower all harmonics, but stop one)."It has been shown that the most efficient way to reduce harmonic losses in the discrete power system is to ensure that they are eliminated at their source. However, it implies that with the elevated price it would be a problem with this strategy. If the parallel-linked filter

is connected farther upstream, greater day to day costs can accumulate due to the losses in the conductors and other plant components that bear harmonic currents. Conversely, there are losses in the filter itself, but there are decreased losses in the connections to the outside world. These losses are essentially the product of the load's greater series impedance. When we change the inductor efficiency, we impact the low-impedance filter resistance, in addition to this the effective inductance. An array of numbers in [20, 30, 40, 50, 60, 70, 80, 90, etc.] usually occupies 16 bits. Examples of the variously include: various kinds of harmonic filters, for example, dual peak, peak, band-pass, and band-stop.

3.4.1 Low pass filter

A low pass filter is a tuned LC circuit that provides low impedance for a specific harmonic present. Furthermore, these filters are used for power factor adjustment. These are commonly used in power system networks to process 5th and 7th order harmonics. Fig. 6 depicts the low pass filter's line diagram.

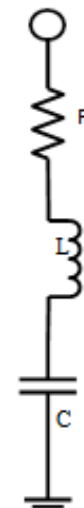


Fig. 6: Low pass filter line diagram

3.4.2 High pass filter

High pass filters, which are often made of passive elements such as inductors and capacitors, have low impedance for harmonic current above a certain corner frequency as shown in Fig. 7. This filter filters out all harmonics present above the corner frequency. Based on the amount of passive filters used, this filter

may be of several different forms, such as single-order, two-order, third-order, and so on. The two-order filter is the most often used of these [44].

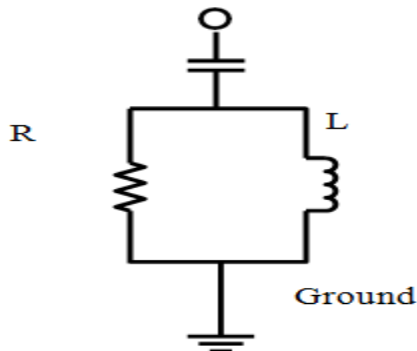


Fig. 7: High pass filter line diagram

3.5 Active harmonic mitigation techniques

Active harmonic reduction methods improved power efficiency by adding equal-but-opposite current or voltage distortion into the network, cancelling the initial distortion. Active harmonic filters (AHFs) as shown in Fig. 8 use fast-switching insulated gate binary transistors (IGBTs) to generate an output current with the necessary form that, when injected into AC lines, cancels out the original load-generated harmonics. The controller is the AHF's beating heart.

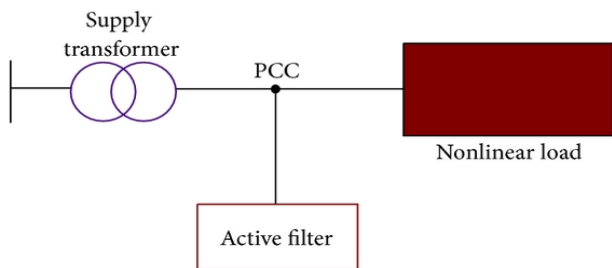


Fig. 8: parallel active filter

The control methods used for the AHF have a significant impact on the filter's efficiency and stability. AHF is designed with two different control schemes. The first calculates the amplitude and phase angle of each harmonic order using quick Fourier transforms. For particular harmonic instructions, the control devices are programmed to generate a current of equivalent amplitude but opposite phase angle. The second type of control is known as full spectrum cancellation, and it involves using the full current waveform by the filter's controller to eliminate the

fundamental frequency variable and direct the filter to insert the opposite of the remaining waveform.

Typically, these filters are sized depending on how much harmonic current they can generate, in 50-ampere increments. After evaluating the sum of harmonic cancellation present, the appropriate amperage of AHF can be selected. The filter is essentially a VSD with a special electronic controller that injects the harmonic current into the device 180 degrees out of balance with the system or drive harmonics. As a consequence, harmonics are cancelled. For eg, if the VSD produced 50 A of 5th harmonic current and the AHF generated 40 A, the sum of 5th harmonic current exported to the utility grid will be 10 A. AHF filters may be categorized as single-phase or three-phase. Depending on the circuit layout, it may even be known as parallel or sequence AHF. APFs are classified into three categories.

3.5.1. Shunt active filter

STATCOM like voltage sourced inverter based Shunt APF as shown in Fig. 9. It is shunt-connected at the PCC. It injects a current that is almost equivalent to and diametrically opposed to the harmonic current [45].

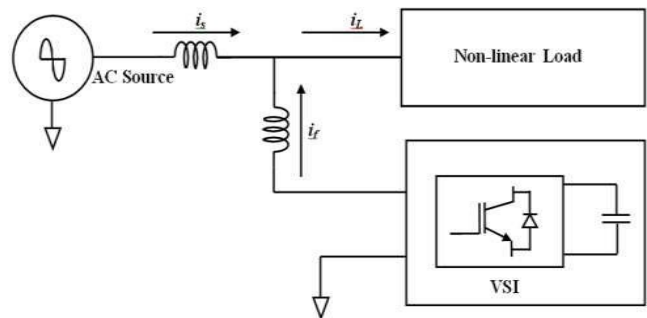


Fig. 9: Shunt active filter

It is ideal for any kind of load and serves as a current source injecting harmonics. It also aids in the improvement of the load power factor. Fig. 9 depicts the control system circuit diagram with shunt attached APF. Because of the higher expense of these filters, they are not recommended for large-scale applications.

3.5.2 Series active filter

These filters, as the name implies, are linked in series with the line by a corresponding transformer. The compensating voltage is injected in series with the

supply voltage through this filter. As a result, it functions as a voltage source that can be controlled to compensate for voltage sag/swell. These filters are more often used where the load involves voltage sensitive equipment. Fig. 10 depicts the power system circuit diagram with sequence linked APF. These filters are not used in use since they must accommodate high current ratings, which increases the size of the filter as well as the losses that arise in the filter [46].

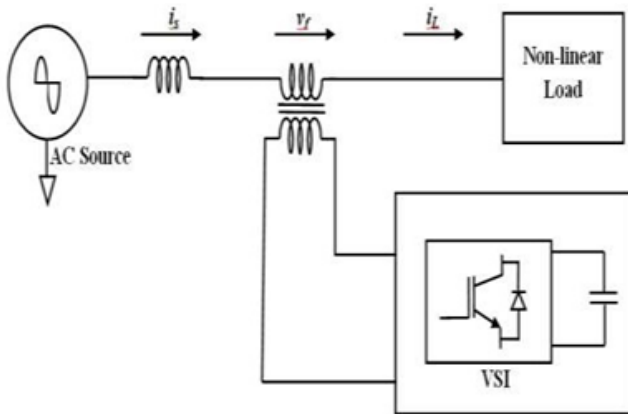


Fig. 10: Block diagram of series active power filter

3.5.3 Unified Power Quality Conditioner (UPQC)

The UPQC is a series and shunt active control filter hybrid. It has the benefit of both series and shunt APF. That is, it accounts for both voltage and current harmonics. As a result, this filter will compensate for nearly all forms of control quality issues encountered by a power device network. Fig. 11 depicts a control device circuit diagram with UPQC [47].

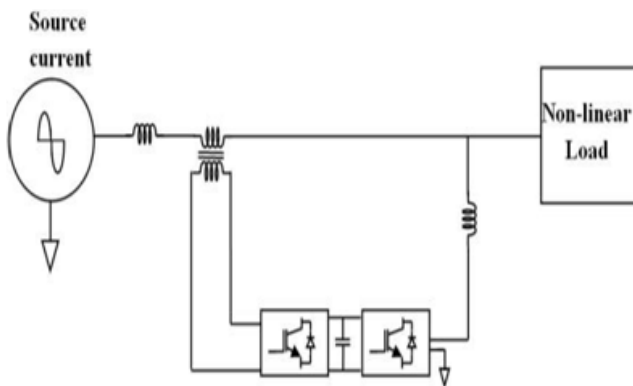


Fig. 11: Circuit Diagram with UPQC

3.6 Hybrid harmonic mitigation technique

AHF and PHF dual connections are often used to minimize harmonics interference rate in the network. Filtering current harmonics with a PHF with set compensation characteristics is inefficient. AHF overcomes the shortcomings of PHF by doing harmonic current removal with a switching-mode control converter. However, the expense of AHF building in an enterprise is prohibitively expensive. The power converter's AHF power level is very high. These restrictions apply to the implementations of AHF in the power grid. To effectively solve the problems of reactive power and harmonic currents, hybrid harmonic filter (HHF) topologies have been created. Hybrid power filters are a hybrid between active and passive power filters. They profit from both active and passive filters. Different hybrid filters exist depending on the circuit configuration and structure. They are as follows

- Shunt APF and Series Active Power Filter
- Shunt Active Power Filter and Shunt Passive Filter
- APF in series with Shunt Passive Filter
- Series APF with Shunt Passive Filter

3.6.1 Shunt APF and Series APF

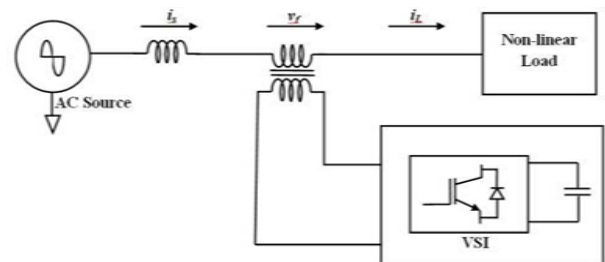


Fig. 12: Shunt APF and Series APF Combination

This filter mixture benefits from both series connected APF, which eliminates voltage harmonics, and shunt connected APF, which eliminates current harmonics. Fig. 12 depicts the circuit diagram. This mixture is used in Flexible AC Transmission Systems (FACTS). However, APF control is complicated, and since this combination requires two APF, control of this filter configuration is much more complex. As a result, this filter combination is not commonly used.

3.6.2 Shunt APF and Shunt Passive Filter

The APF's power rating is determined by the order of frequencies it filters out. As a result, an APF used for filtering out low order harmonics has a low power

rating although being small and inexpensive. This reasoning is employed in the development of this filter mix. The shunt-connected APF filters out low-order current harmonics, while the shunt-connected passive filter filters out higher-order harmonics. Fig. 13 depicts the circuit structure of this filter topology. However, the key drawback of this filter design is that it is incompatible with variable loading conditions. Since the passive filter may only be calibrated for a certain predetermined harmonic [48].

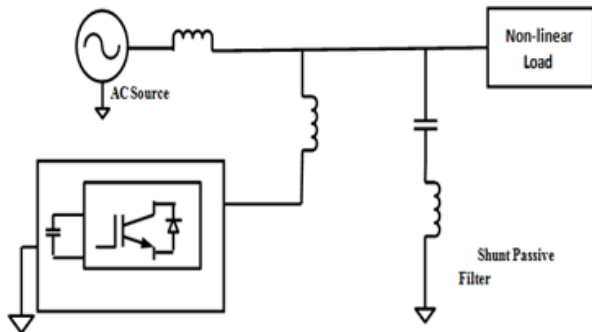


Fig. 13: Shunt APF and Shunt Passive Filter

3.6.3 APF in Series with Shunt Passive Filter

The Active Power Filter is paired in series with a Shunt connected Passive Filter in this filter setup. This filter configuration's circuit diagram is seen in Fig. 14. The drawback of this setup is that the passive filter eliminates tension on the APF's control electronic switches. This filter is useful in low to high voltage ranges [49].

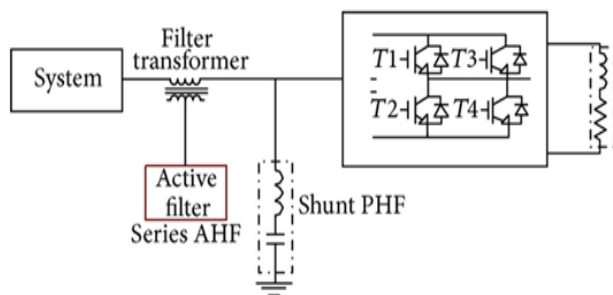


Fig. 14: Series APF with Shunt Passive Filter

3.6.4. Series APF with Shunt Connected Passive Filter

The dynamic control technique is a challenge with the Series APF and Shunt APF combination seen in Fig. 15. To address this problem, the shunt APF is

substituted with a shunt linked passive filter. The passive power filter does not need any extra control circuitry and is thus less expensive. Figure 3.10 depicts this filter mix [50].

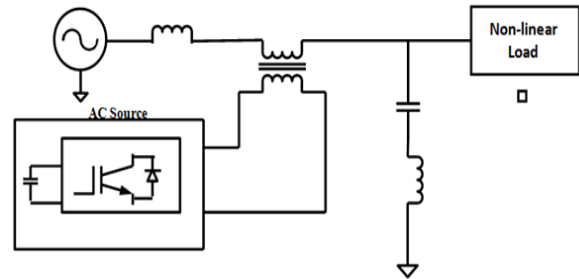


Fig. 15: Series APF with Shunt Passive Filter

4. Proposed system

4.1 Overview of proposed system

Nonlinear Load (NL) and extensive use currently Enhanced Renewable Energy Generation Penetration (REG) requires a premium medium voltage supply Park very vulnerable to power quality (PQ) issues. As the main part of NL and REG, power. The electronic devices that are most to blame are those with abnormal and reactive demand and harmonic currents in the distribution network, while the right operating voltage is needed for an ideal supply. Not only can power conditioners cancel out harmonics and reactive power, but they can also keep the load voltage steady. This makes the compensator the most desirable level of network distribution. Most of the time, the traditional UPQC is on or at the grid. Side NL/REG, the distribution grid in Fig. 16 shows the different UPQC cabling systems. In Fig. 16. (a), the following UPQC is installed on the grid and NL/REG interfaces. The grid and transformer Let's say that the load current analysis shows that the grid voltage is messed up. In Fig. 16.a, the harmonic flow path is shown as a harmonic load flowing into a specific transformer. This causes a harmonic transformer leakage flow, which causes the transformer to have a lot of problems. For instance, extra iron and copper losses, noise, vibration, a rise in temperature, etc. The typical cable system for this UPQC works to keep harmonics from getting into the public grid and keeps the load voltage in check, but it can't fix the problems that harmonics cause in the transformer. Fig.16 shows how UPQC is set up on the NL/REG side as Fig.16(b).

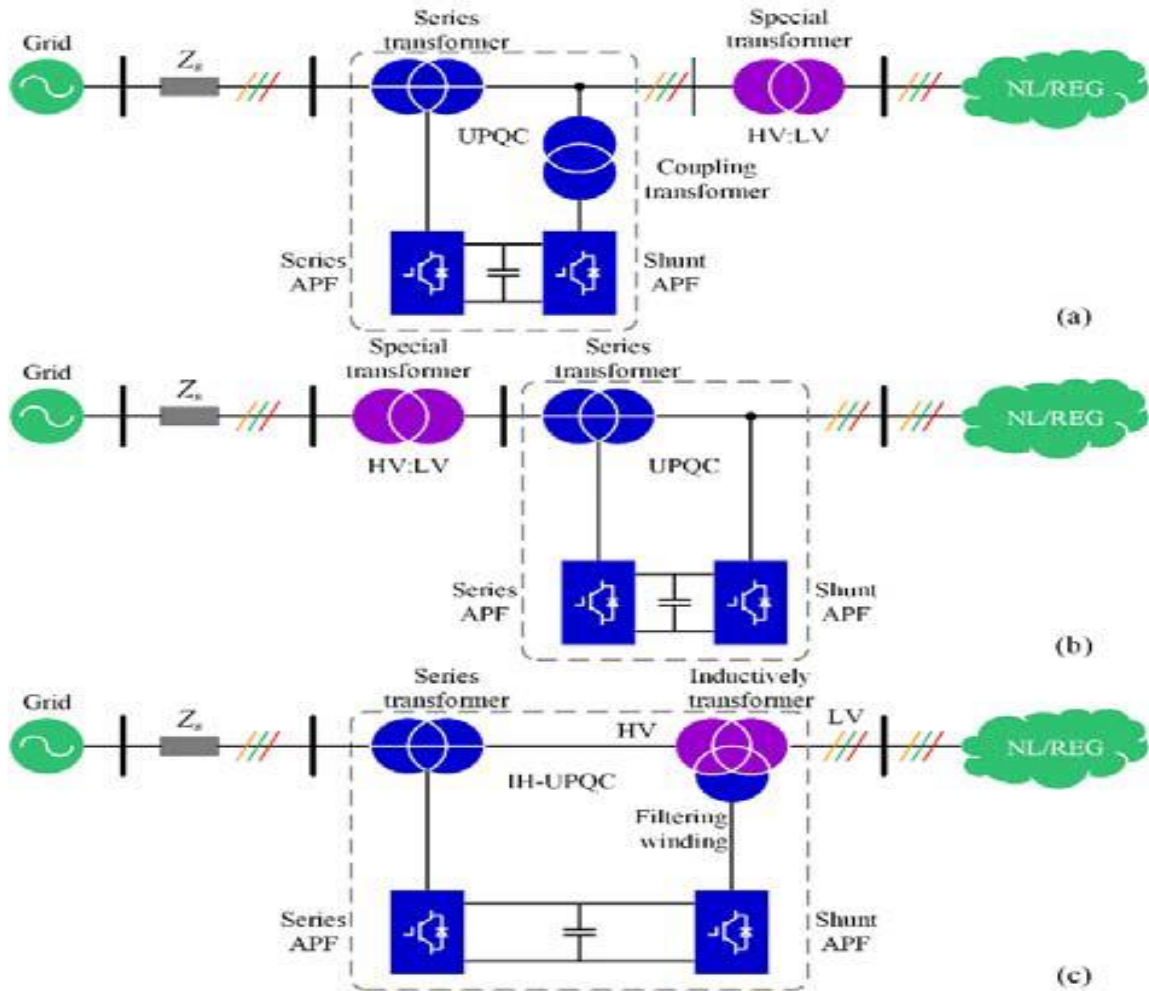


Fig. 16: Different UPQC wiring schemes in distribution network. (a) Traditional UPQC located at grid side, (b) Traditional UPQC located at NL/REG side, (c) IH-UPQC topology

The face all the distorted voltages must still suffer from the special transformer, which introduces definitely harmonic leakage in the transforming. Above all, when UPQC is directly involved it can result in parallel to the converter based REG. The theorem of the additional element of stability. At the same time, UPQC systems can perform series compensation for both parallel active power line Active Power Filters (APFs) series and parallel filters. Li and Luo's proposed inductive power filtering approach should minimize the harmful effects of harmonics on the transformer and harmonic removal close to harmonic origins. In order to compensate for the harmonics, the initial IPF procedure uses a series of single tuned filters [51].

In particular, inductive filtering methods effectively solved harmonic deletion, but few of these investigations have been carried out to regulate simultaneous voltage. This article presents a high integration, reduced DC-link voltage, and adequate harmonic insulation of transformer in the medium-voltage premium power supply park. This article presents, unlike the above described UPQC cables, an inductive hybrid-UPQC (IH-UPQC) seen in Fig. 16.(c). In order to apply the system of inductive filters to mitigate the detrimental impact of harmonics on the transformer, the IH-UPQC integrates the shunt Hybrid Action Filter (HAPF) with the Induced Filtering Transformer. In addition, because of the insulation characteristic of the transformer, the IH-UPQC has a natural benefit of damping resonance [52].

5. Simulation Results and Discussion

The Matlab/Simulink platform is used to test how well the proposed method works. The hybrid UPQC is linked to the grid and to the load. With a trigger angle of 20 degrees, a power electronic controller is used as a load that is not linear. Figures 17 and Fig.18 show the simulation results of grid and load voltages before and after compensation. Figure.19 is a picture of the compensation currents. From Fig. 24 and Fig.26, when the proposed UPQC is put into place, the THD of the grid goes down from 11.65% to 2.24%. Figure.20, Figure 21, and Figure 22 show the grid current, the load current, and the compensation currents when UPQC is used. Because of the proposed UPQC form Fig.25 and fig.27, the THD of grid current went down from 30.97% to 1.53%.

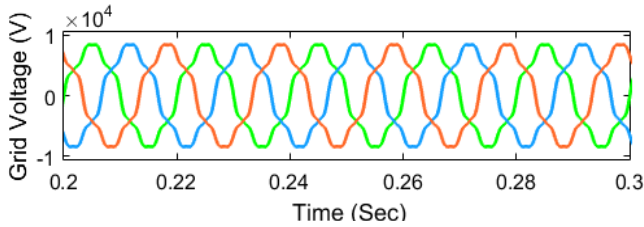


Fig. 17: Grid voltage before compensation

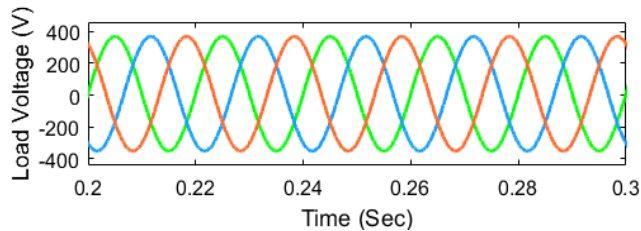


Fig. 18: Load voltage after compensation

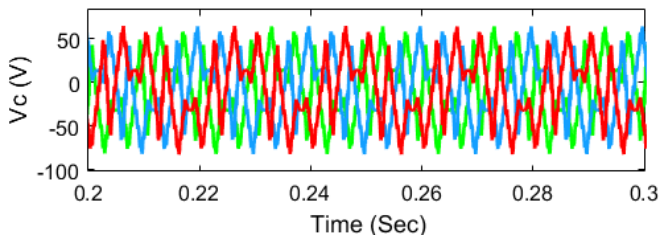


Fig. 19: Compensating voltage

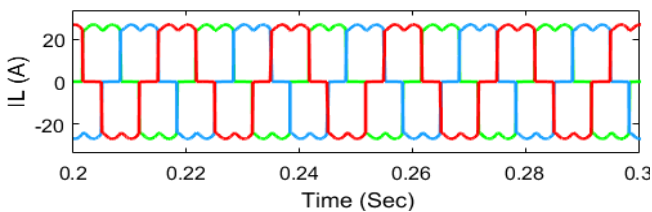


Fig. 20: Load current before compensation with UPQC

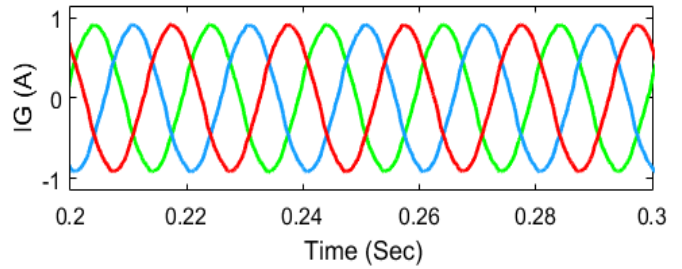


Fig. 21: Load current after compensation with UPQC

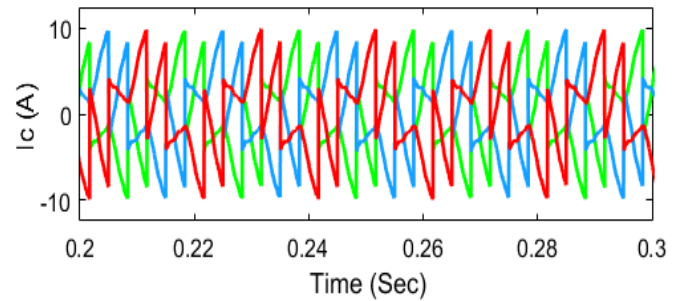


Fig. 22: Compensation current

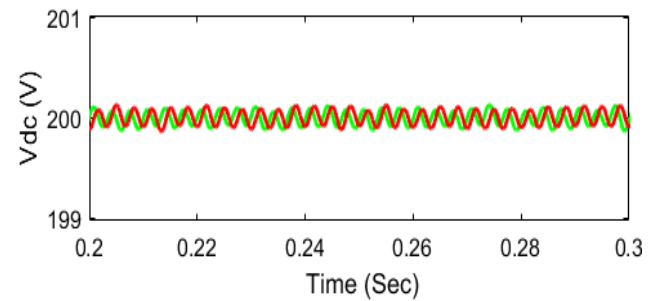


Fig. 23: DC split link voltages

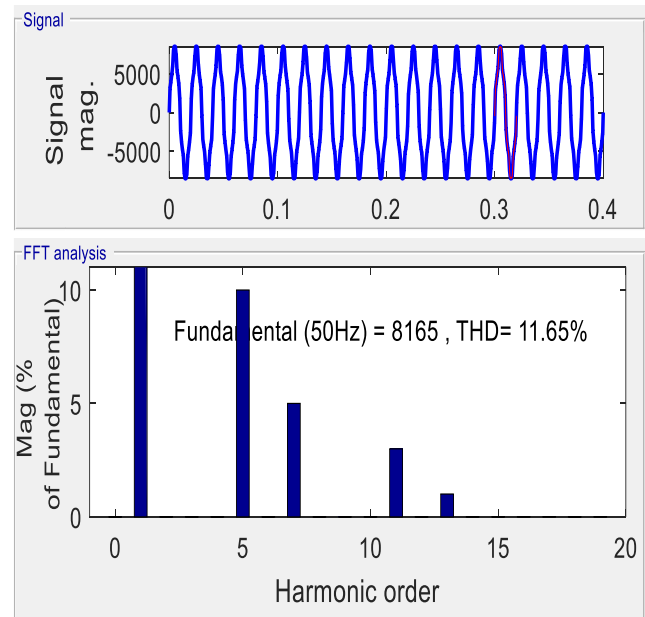


Fig. 24: Grid voltage THD before compensation

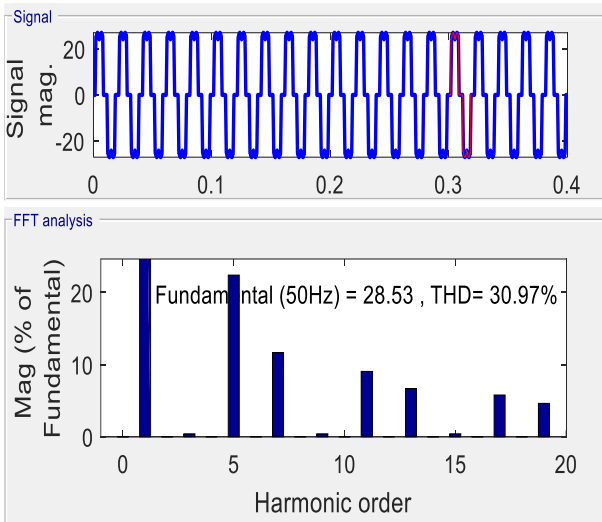


Fig. 25: Grid current THD before compensation

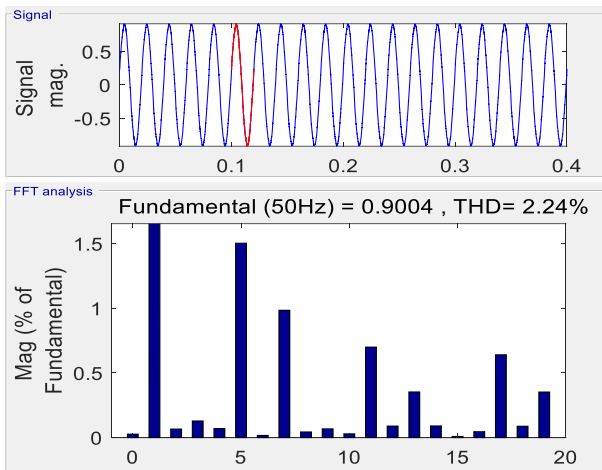


Fig. 26: Load voltage THD after compensation with proposed UPQC

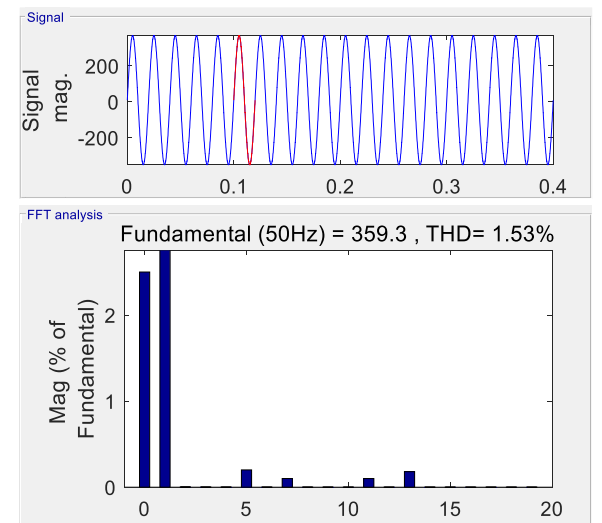


Fig. 27: Load current THD after compensation with proposed UPQC

In real life, huge loads are needed at peak periods, and it's not feasible to provide the necessary power demand in a matter of seconds. When the demand for power is great, the voltages in the system tend to drop. Short-term voltage fluctuations are often caused by large loads that need large inrush currents. The voltage will drop because of the large inrush currents. When voltage drops below a certain level, it affects the reliability of the electricity supply. Increases in voltage occur naturally as a result of shutting off large loads. It occurs under mild load circumstances and triggers a sudden shift in load impedance, which in turn may increase voltage. Fig. 28-35, show the simulation results for voltage dips and spikes. At $t=0.4$ sec, a 20% voltage sag is induced on phases A and C, and a 10% voltage sag is induced on phase B for the purposes of this study. In Fig. 29, we see the sag compensation voltages. At $t=0.4$ sec, the UPQC instantly generates the compensating voltages. Figure.30 displays the clean, low-THD corrected load voltages. Voltage fluctuations in the DC links are seen in Fig. 31. At $t=0.4$ sec, we also generate the voltage swell seen in Fig. 37, which has a 20% swell on phases A and C and a 10% swell on phase B. Parallel reactive power quality control adjusted voltages and load currents are shown in Figures 33 and fig.34. Figure.35 depicts the DC fluctuation in DC link voltages after voltage sag correction, while Figures 37 and 48 depict the reactive power and active power compensation, respectively, which indicate that the reactive power is successfully compensated to reach unity power factor using the proposed method.

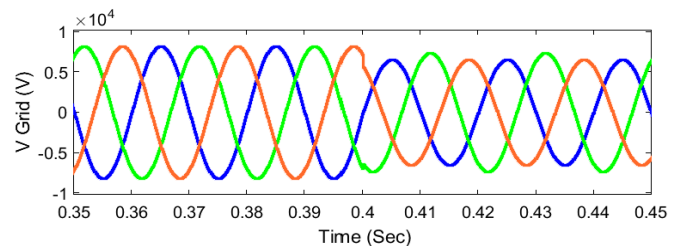


Fig. 28: Grid voltages with sag

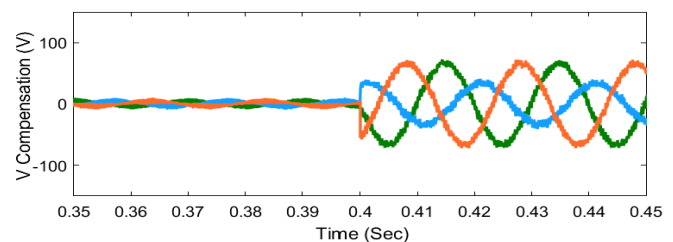


Fig. 29: Compensation voltages

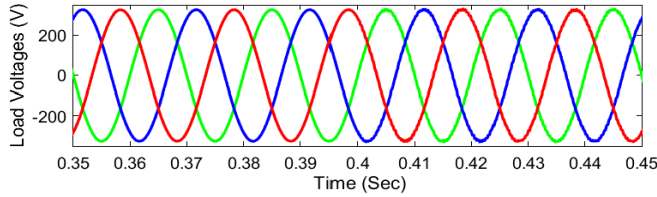


Fig. 30: Load currents after compensation

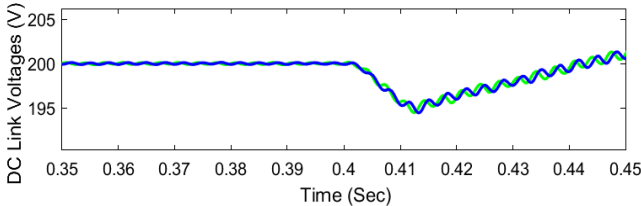


Fig. 31: DC link voltages after compensation of voltage sag

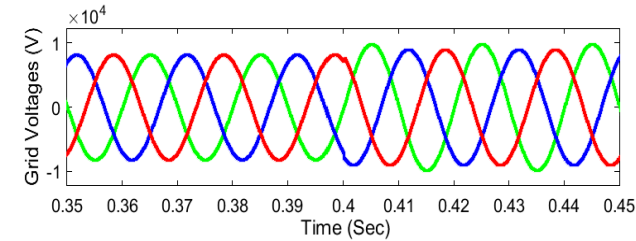


Fig. 32: Voltage swell in the integrated system

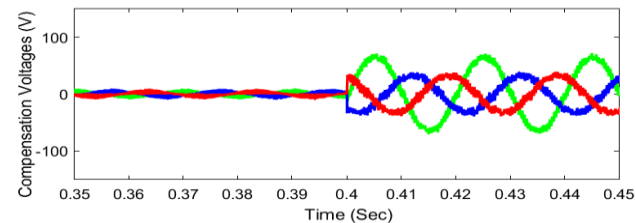


Fig. 33: Voltage swell compensation voltages

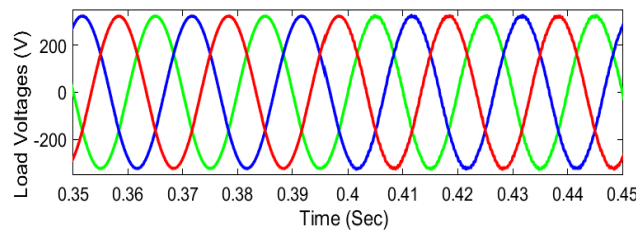


Fig. 34: Load voltages after voltage swell compensation

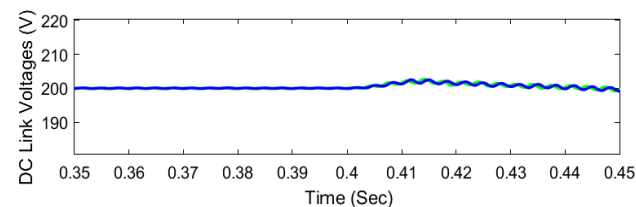


Fig. 35: DC link voltages after compensation of voltage swell

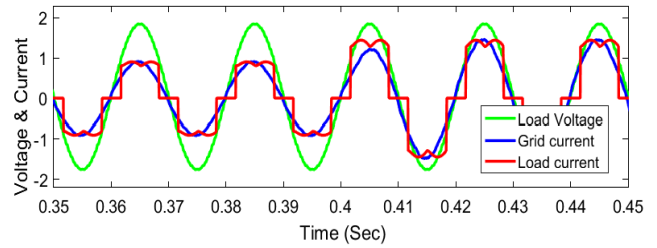


Fig. 36: Voltage, load current and grid current with proposed UPQC

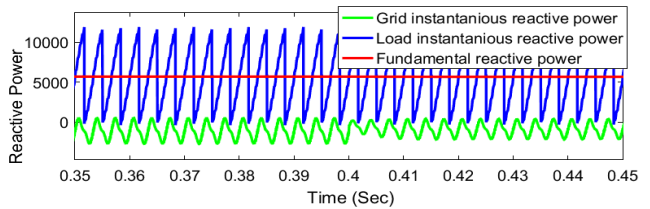


Fig. 37: Grid and load instantaneous reactive power

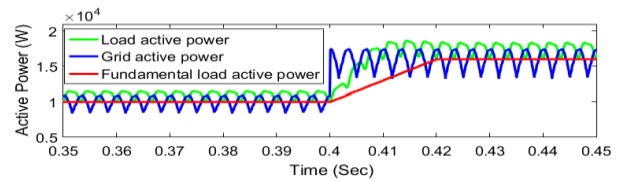


Fig. 38: Grid and load instantaneous active power

6. Conclusion

In this thesis, we propose a UPQC to improve the PQ grid and provide crucial NL and REG in the medium power park with premium electricity. When it comes to mitigating the negative effects of harmonics on the transformer, the IH-UPQC has a distinct advantage over conventional UPQC since it combines shunt HAPF and IFT for inductive filtering that is both satisfactory and useful to device stability. The three-phased analogous circuit and mathematical model are described to shed light on the mechanics of harmonic suppression and voltage management; control method and the layout of important circuit components are also covered. The simulation results demonstrate that the IH-UPQC does more than only reduce harmonics and smooth out the reactive strength near the harmonic spring; it also corrects the grid voltage, imbalances, and slopes associated with harmonics, making the delivery power system more stable and reliable. The suggested method has wide applicability, and might be used in industrial DC power supply systems, EG systems, and HVDC transmission systems, among others.

Conflict of Interest

The authors declare that they do not have any conflict of interest

References

- [1] F. Wang, J. L. Duarte & M. A. M. Hendrix "Grid-Interfacing Converter Systems with Enhanced Voltage Quality for Micro grid Application—Concept and Implementation", *IEEE Transactions on Power Electronics*, Vol. 26, No. 12, pp. 3501-3513, 2011.
- [2] F. Mekri, M. Mohamed & A. A. Nadia "New hysteresis control band of a unified power quality conditioner", *Electric Power Systems Research*, Vol. 81, No. 9, pp.1743-1753, 2011.
- [3] F. Hideaki & H. Akagi "The unified power quality conditioner: the integration of series-and shunt-active filters", *IEEE transactions on power electronics*, Vol. 13, No. 2, pp. 315-322, 1998.
- [4] G. Eskandar & S. Saadate "Improving of transient stability of power systems using UPFC", *IEEE Transactions on power delivery*, Vol. 20, No. 2, pp. 1677-1682, 2011.
- [5] G. Arindam, A. K. Jindal & A. Joshi "Design of a capacitor-supported dynamic voltage restorer (DVR) for unbalanced and distorted loads", *IEEE transactions on power delivery*, Vol. 19, No.1, pp. 405-413, 2004.
- [6] A. K. Goswami, C. P. Gupta & G. K. Singh "Minimization of voltage sag induced financial losses in distribution systems using FACTS devices", *Electric Power Systems Research*, Vol. 81, no. 3, pp.767-774, 2011.
- [7] G. Rajesh, A. Ghosh & A. Joshi "Performance comparison of VSC-based shunt and series compensators used for load voltage control in distribution systems", *IEEE transactions on power delivery*, vol. 26, no.1, pp. 268-278, 2011.
- [8] H. Byung, b. Bae "Unified power quality conditioner with super-capacitor for energy storage", *International Transactions on Electrical Energy Systems*, Vol. 18, No. 4, pp. 327-343, 2008.
- [9] A. H. Prasad, Y. R. Reddy, & P. V. Kishore, "Photovoltaic Cell as Power Quality conditioner for Grid connected system", *International Journal of Scientific and Engineering Research*, Vol. 2, No. 10, pp. 1-8, 2011.
- [10] S. S. Hasheminejad, S. Jazebi, "Power quality disturbance classification using S-transform and hidden Markov model", *Electric Power Components and Systems*, Vol. 40, No. 10, pp.1160-1182, 2012.
- [11] H. Yassine & A. Boukabou "An efficient impulsive noise cancellation scheme for power-line communication systems using ANFIS and chaotic interleaver", *Digital Signal Processing*, 2017.
- [12] Hooshmand, R. Allah & M. T. Esfahani "A new combined method in active filter design for power quality improvement in power systems", *ISA transactions*, Vol. 50, No. 2, pp.150-158, 2011.
- [13] M. Hosseini, H. A. Shayanfar, & F. Firuzabad, "Modeling of unified power quality conditioner (UPQC) in distribution systems load flow", *Energy Conversion and Management*, Vol. 50, No. 6, pp. 1578-1585, 2009.
- [14] H. S. Abolfazl & I. M. P. Afrakoti "Neutron noise source reconstruction using the Adaptive Neuro-Fuzzy Inference System (ANFIS) in the VVER-1000 reactor core", *Annals of Nuclear Energy*, Vol. 105, pp. 36-44, 2017.
- [15] I. WR Anis & M. M. Morcos "Artificial intelligence and advanced mathematical tools for power quality applications: A survey", *IEEE Transactions on Power Delivery*, Vol. 17, No. 2, pp. 668-673, 2002.
- [16] J. Alireza & K. A. Haddad "A single-phase active device for power quality improvement of electrified transportation", *IEEE transactions on industrial electronics*, Vol. 62, No. 5, pp. 3033-3041, 2015.
- [17] J. Alireza, A. Hamadi, L. Woodward & K. AlHaddad "Experimental investigation on a hybrid series active power compensator to improve power quality of typical households", *IEEE Transactions on Industrial Electronics*, Vol. 63, No. 8, pp. 4849- 4859, 2016.
- [18] J. Jayachandran, & M. Sachithanandam, "ANN based controller for three phase four leg shunt active filter for power quality improvement", *Ain Shams Engineering Journal*, Vol. 7, No.1, pp. 275-292, 2016.
- [19] J. A Rezaee "Brainstorm optimisation algorithm (BSOA): An efficient algorithm for finding optimal location and setting of FACTS devices in electric power systems", *International Journal of*

- Electrical Power & Energy Systems*, Vol. 69, pp. 48-57, 2015.
- [20] K. Kannan, & N. Rengarajan "Photovoltaic based distribution static compensator for power quality improvement", *International Journal of Electrical Power and Energy Systems*, Vol. 42, pp. 685-692, 2012.
- [21] P. Kanirajan, & V. S Kumar "Power quality disturbance detection and classification using wavelet and RBFNN", *Applied Soft Computing*, Vol. 35, pp. 470-481. 183, 2015.
- [22] K. S. Bhaskar, N. Geddada, M. K. Mishra & B. K. Kumar "A modified three-phase four-wire UPQC topology with reduced DC-link voltage rating", *IEEE transactions on industrial electronics*, Vol. 60, No. 9, pp. 3555-3566, 2011.
- [23] K., Ahad & M. V. Sohrforouzani "Power system damping using fuzzy controlled facts devices", *International Journal of Electrical Power & Energy Systems*, Vol. 28, No.5, pp. 349-357, 2006.
- [24] Khadkikar & Vinod "Enhancing electric power quality using UPQC: A comprehensive overview", *IEEE transactions on Power Electronics*, Vol. 27, No. 5, pp. 2284-2297, 2012.
- [25] V. Khadkikar "Enhancing Electric Power Quality Using UPQC: A Comprehensive Overview", *IEEE Transactions on Power Electronics*, Vol. 27, No. 5, pp. 2284-2297, 2012.
- [26] K. Vinod & A. Chandra "UPQC-S: A novel concept of simultaneous voltage sag/swell and load reactive power compensations utilizing series inverter of UPQC", *IEEE transactions on power electronics*, Vol. 26, No. 9, pp. 2414-2425, 2011.
- [27] K. Vinod "Enhancing electric power quality using UPQC: A comprehensive overview", *IEEE transactions on Power Electronics*, Vol. 27, No. 5, pp. 2284-2297, 2012.
- [28] B. K. Chetan, M. A. Chaudhari & V. B. Borghate "Conjugate gradient back-propagation based artificial neural network for real time power quality assessment", *International Journal of Electrical Power & Energy Systems*, Vol. 82, pp. 197-206, 2016.
- [29] K. Suhail, A. Asuhaimi, B. M. Zin, A. S. B Mokhtar & M. Pesaran "A comprehensive overview on signal processing and artificial intelligence techniques applications in classification of power quality disturbances", *Renewable and Sustainable Energy Reviews*, Vol. 51, pp. 1650-1663, 2015.
- [30] K. Suhail, A. A. M. Zin, A. P. Memon, A. S. Mokhtar "A new optimal feature selection algorithm for classification of power quality disturbances using discrete wavelet transform and probabilistic neural network", *Measurement*, Vol. 95, pp. 246-259, 2017.
- [31] K. Y. Seong & D. Y. Won "Mitigation of the flicker level of a DFIG using power factor angle control", *IEEE Transactions on Power Delivery*, Vol. 24, No. 4, pp. 2457-2458, 2009.
- [32] K. Vassilis, J. N Lygouras, A. Tarczynski & H. S Chowdrey "Artificial odor discrimination system using electronic nose and neural networks for the identification of urinary tract infection", *IEEE Transactions on Information Technology in Biomedicine*, Vol. 12, No. 6, pp. 707-713, 2008.
- [33] A. Kumar, A. S. Rajasekar, & P. A. D. V. Raj "Power quality profile enhancement of utility connected microgrid system using ANFIS-UPQC", *Procedia Technology*, Vol. 21, pp. 112-119, 2007.
- [34] C. Kumar & M. K. Mishra "A voltage-controlled DSTATCOM for power-quality improvement", *IEEE transactions on power delivery*, Vol. 29, No. 3, pp. 1499-1507, 2014.
- [35] K. R. Singh, B. Shahani, Chandra, & A. Haddad "Recognition of power-quality disturbances using S-transform-based ANN classifier and rule-based decision tree", *IEEE Transactions on Industry Applications*, Vol. 51, No. 2, pp. 1249-1258, 2005.
- [36] R. Kumar, B. Singh, D. T. Shahani, & C. Jain "DualTree Complex Wavelet Transform-Based Control Algorithm for Power Quality Improvement in a Distribution System", *IEEE Transactions on Industrial Electronics*, Vol. 64, No.1, pp.764-772, 2017.
- [37] B. L. Brian & A. Pahwa "Power distribution system reliability planning using a fuzzy knowledge-based approach", *IEEE Transactions on Power Delivery*, Vol. 15, No. 1, pp. 279-284, 2000.
- [38] L. M. Barghi & A. Teke "A novel wavelet transform based voltage sag/swell detection algorithm", *International Journal of Electrical Power & Energy Systems*, Vol. 71, pp. 131-139, 2015.
- [39] L. W. Cheol, D. M. Lee & T. K. Lee "New control scheme for a unified power-quality compensator-Q with minimum active power injection", *IEEE*

- Transactions on Power Delivery*, Vol. 25, No.2, pp.1068-1076, 2010.
- [40] L. Zhigang, Q. Zhang, Z. Han & G. Chen "A new classification method for transient power quality combining spectral kurtosis with neural network", *Neurocomputing*, Vol. 125, pp. 95-101. 185, 2014.
- [41] M. O. Prakash & A. G. Shaik "Topological aspects of power quality improvement techniques: A comprehensive overview", *Renewable and Sustainable Energy Reviews*, Vol. 58, pp. 1129-1142, 2016.
- [42] M. I. Mostafa, E. F. E. Saadany & M. M. A Salama "A flexible DG interface based on a new RLS algorithm for power quality improvement", *IEEE Systems Journal*, Vol. 6. No. 1, pp. 68-75, 2012.
- [43] R. A. Mastromauro, L. Kerekes, & D. Aquila "A Single-Phase Voltage-Controlled Grid-Connected Photovoltaic System with Power Quality Conditioner Functionality", *IEEE Transactions on Industrial Electronics*, Vol. 56, No. 11, pp. 4436-4444, 2014.
- [44] M. Fatiha, M. Mohamed & A. A. Nadia "New hysteresis control band of an unified power quality conditioner", *An International Journal of Electric Power Systems Research*, Vol. 81, pp. 1743-1753, 2011.
- [45] M. Fatiha, M. Mohamed & A. A. Nadia "New hysteresis control band of an unified power quality conditioner", *An International Journal of Electric Power Systems Research*, Vol. 81, pp.1743-1753, 2011.
- [46] M. Pedro, E. J. R Espinoza, L. A Morán, J. R Rodriguez, V. M. Cardenas, C. R. Baier & J. A. Muñoz "Analysis, design and control of a unified power-quality conditioner based on a current-source topology", *IEEE transactions on power delivery*, Vol. 27, No. 4, pp. 1727-1736, 2012.
- [47] M. M. Emin, A. Teke, C. Bayindir & M. Tumay "Power quality improvement with an extended custom power park", *Electric Power Systems Research*, Vol. 79, No. 11, pp.1553-1560.
- [48] V. M. Jovic & Y. Zhang "Modeling of FACTS devices for voltage sag mitigation studies in large power systems", *IEEE transactions on power delivery*, Vol. 25, No. 4, pp. 3044-3052, 2010.
- [49] A. Moghaddamia, M. G. Gousheh, J. Piri, S. Amin, & D. Han "Evaporation estimation using artificial neural networks and adaptive neuro-fuzzy inference system techniques", *Advances in Water Resources*, Vol. 32, No.1, pp. 88-97, 2009.
- [50] M. Reza, A. Y. Varjani & H. Mokhtari, "Multiconverter unified power-quality conditioning system: MCUPQC", *IEEE Transactions on Power Delivery*, Vol. 24, No. 3, pp. 1679-1686, 2009.
- [51] F. C. M. Luís, M. Aredes, C. Couto & J. L. Afonso "Control algorithms for a unified power quality conditioner based on three-level converters", *International Transactions on Electrical Energy Systems*, Vol. 25, No. 10, pp. 2394-2411, 2015.
- [52] M. J. Fil, S. S. Lim, J. C. Kim & S. Y. Yun, "Assessment of the impact of SFCL on voltage sags in power distribution system", *IEEE Transactions on Applied Superconductivity*, Vol. 21, No. 3, pp. 2161-2164, 2011.
- [53] A. M. Munoz, D. L. Rosa, L. Rodriguez, F. Arias, B. Outerino & R. Adana "Improvement of power quality using distributed generation", *International Journal of Electrical Power & Energy Systems*, Vol. 32, No. 10, pp. 1069-1076, 2010.
- [54] M. Walid, & El. Hawary "Wavelet packet transformbased power quality indices for balanced and unbalanced three-phase systems under stationary or nonstationary operating conditions", *IEEE transactions on power delivery*, Vol. 24, No. 4, pp. 2300-2310, 2009.
- [55] C. F. Norman, J. Y. C. Chan, W. H. Lau & L. L. Lai "Hybrid wavelet and Hilbert transform with frequency-shifting decomposition for power quality analysis", *IEEE Transactions on Instrumentation and Measurement*, Vol. 61, No.12, pp. 3225-3233, 2012.



Copyright: © 2022 by the authors, Licensee ITEECS, India. This article is an open access article distributed under the terms and conditions of the Creative Commons Attribution (CC BY) license (<https://creativecommons.org/licenses/by/4.0/>).
